



**CINCINNATI WALDORF SCHOOL**

# **FALL 2020 SCHOOL PLAN**

CINCINNATI WALDORF SCHOOL  
6743 Chestnut St  
Cincinnati, OH 45227  
(513) 541-0220

[WWW.CINCIWALDORF.ORG](http://WWW.CINCIWALDORF.ORG)

# Table of Contents

PAGE 1.	ABOUT CWS
PAGE 2.	RE-OPENING
PAGE 3.	SYMPTOM ASSESSMENT
PAGE 4.	CWS PROTOCOLS
PAGE 5.	FACE COVERING POLICY
PAGE 6.	SOCIAL DISTANCING/DISTANCE LEARNING
PAGE 7.	DURING SCHOOL POLICY
PAGE 8.	PRESCHOOL/KINDERGARTEN
PAGE 9-10.	CLEANING PLAN
PAGE 11.	EVENTS AND GATHERING POLICY
PAGE 12.	TRANSPORTATION
PAGE 13-14.	AUXILIARY SERVICES
PAGE 14 -	OHIO PUBLIC HEALTH ADVISORY SYSTEM RANKINGS & CWS DISTANCE LEARNING PROGRAM
PAGE 15-18.	MAPS



## ABOUT CWS

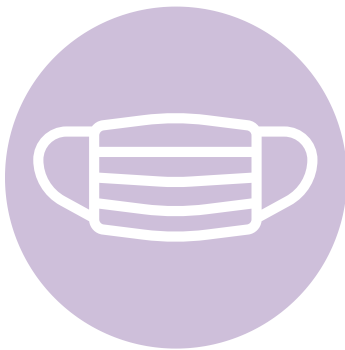
The Cincinnati Waldorf Lower School is a non-religious, co-educational school serving students and families from preschool through eighth grade. Our lower school is located in the Village of Mariemont, a suburb of Cincinnati, Ohio, in the historic Dale Park school building. This location is easily accessible by major roadways, and students from Cincinnati, its neighboring suburbs, outlying Ohio counties, and the Ohio-Kentucky-Indiana tri-state area attend CWS. We are close to local parks, play areas, walking trails, and wooded areas. CWS holds an Ohio State Board of Education charter and is certified as a not-for-profit 501(c)(3) corporation. Our enrollment for the 2020-21 school year is projected to be approximately 240 students.

# Re-Opening

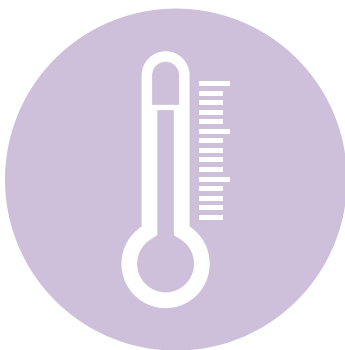
Our re-opening in the fall will provide a largely outdoor educational experience for preschool aged children and school-aged children K-8. We will ensure compliance with CDC, ODE, and the Ohio Department of Health for COVID-19 precautions while opening our school to children. Students will be on campus 5 days a week for normal school hours.



Outdoor education and separation of classes are essential parts of our plan. Each class will have an outdoor classroom and an indoor classroom. There will be no more than 25 students in a 22'X35' classroom. Each floor of the building will have no more than 5 classrooms. This will allow ample spacing and separation of the classrooms and bathrooms. The students will only go to their indoor classroom, their outdoor classroom, and designated bathroom. Subject teachers will rotate to the students in order to reduce exposure.



Facial coverings for faculty are mandatory, with allotted breaks. Facial coverings for students in Grades k - 8 are mandatory, with allotted breaks. Facial coverings for Preschool and Kindergarten students are encouraged during specific activities, as needed.



Vigorous symptom assessments, and isolation and quarantine of sick students and staff will be a top priority. Signs will be posted throughout the building and via electronic communications requiring students and staff be symptom-free before attending school.

# Symptom Assessment

Employees and Students with symptoms of the virus causing COVID-19 may not enter school campuses. It is agreed that all families in the community, whether of faculty or students, will perform daily symptom assessments at home before planning to attend school. Symptoms of the virus causing COVID-19 include fever (100° F and above), chills (with or without fever), muscle aches, cough, shortness of breath or difficulty breathing, fatigue, muscle or body aches, headache, loss of taste/smell, sore throat, congestion or runny nose, nausea or vomiting, and diarrhea.

Parents are encouraged to be in communication and use their best judgement with regard to their family's travel plans outside of the greater Cincinnati area, being mindful of all State and federal travel advisories and any quarantines required for them or their family as a result of their travels.

Upon arriving on campus, at lunch, and at the transition to late care (if applicable), all employees and students will be assessed for symptoms (including taking their temperature with an infrared no-contact thermometer). If an Employee or Student develops symptoms after arriving on campus they will be isolated and sent home with the expectation that they seek evaluation by a healthcare professional. Individuals who potentially have been exposed should follow quarantine and other recommendations from public health officials and their healthcare provider. If an employee, student, or members of their household have experienced symptoms, they may not enter school campuses until they meet the CDC guidelines on isolation and criteria for return to work/school, satisfying the following two conditions: 1) All members of the household are symptom free for at least 72 hours without respiratory issues or the help of medicines, and/or 2) Those who experienced symptoms have a note from a healthcare professional stating that they can safely return to school or work.

Cincinnati Waldorf School will work closely with Hamilton County Public Health in responding to any cases of COVID-19 within the community. It is expected that, if an employee or student has a member of their household test positive for COVID-19 or someone they have come into contact with, they will be required to quarantine for a period of time outlined by a healthcare professional (generally 14 days) in addition to meeting the above conditions before returning to school. If an employee or student tests positive for COVID-19, all students and faculty who have come into contact with that person will be required to quarantine for a period of time as recommended by a healthcare professional (generally 14 days) in addition to meeting the above conditions before returning to school. Hamilton County Public Health should be notified of all confirmed cases and will conduct any contact tracing they deem necessary. In the event that an outbreak of multiple cases occurs, Hamilton County Public Health may consider putting a campus closure into effect. To avoid this we must all work vigilantly to regularly assess symptoms and act responsibly by staying home when not well to care for ourselves and our loved ones and out of consideration for the health of the community as a whole.

# CWS Protocols Will Include:

## GENERAL

- Staff will perform daily personal symptom assessment.
- Staff will be required to stay home if symptomatic.
- Classes will be kept separate from each other at all times.
- Staff will follow CDC guidelines when administering care to sick children.

## ENROLLMENT/SCHOOL FORMS

- Enrollment documents and returning student forms will notify parents about new policies and procedures to prevent the spread of COVID-19.
- Parents will sign a liability waiver including a pledge to assess their students for symptoms every morning prior to coming to school.

## ARRIVAL/DISMISSAL

\*Curbside only, with designated staff receiving students from vehicles, to reduce contact between caregivers. Parents will not be parking and escorting children into the building. Specific details will be provided to parents before the start of school.

## ARRIVAL/DISMISSAL

\*Curbside only, with designated staff receiving students from vehicles, to reduce contact between caregivers. Parents will not be parking and escorting children into the building. Specific details will be provided to parents before the start of school.

# Facial Covering Policy

Wearing face coverings is especially important during times of elevated community spread, particularly when social distancing is not possible. Although children are less likely to become severely ill, they often are carriers of the virus and can spread it to school staff or family members at home, some of whom may be high-risk. Additionally, those family members can then carry the virus to others in workplace and community settings.

**School Faculty** must wear facial coverings, with allotted break time. Facial shields will be considered as an alternative when cloth facial coverings would hinder the learning process.

Exceptions include:

- The wearing of a facial covering is not advisable due to a medical condition.
- Facial coverings are not required when a faculty member works alone in an assigned area

**Students in Grades 1 - 8** will be required to have a gaiter-type facial covering (or mask-type facial covering with a string so that it cannot fall on the ground) with them at all times. Facial coverings will need to be clean, so students should have a few of them, and they should be laundered frequently. Students must wear facial coverings when indoors, and when unable to socially distance outdoors, with allotted break time.

Exceptions include:

- The wearing of a facial covering is not advisable due to a medical condition or disability.
- Students are actively engaged in physical activity, provided that six feet or more social distancing is maintained.
- Students are actively engaged in athletic practices, scrimmages, or competitions permitted under a prior Department of Health Order.
- Students are eating or drinking while seated and socially distanced.

**Children in Preschool and Kindergarten** will be required to have a plain (no print) gaiter-type facial covering (or mask-type facial covering with a string so that it cannot fall on the ground) with them at all times. Facial coverings will need to be clean, so students should have a few of them, and they should be laundered frequently. Children in Preschool and Kindergarten will be asked to wear face coverings when they are:

- making transitions in a group situation.
- waiting together in a group that prohibits social distancing.
- gathered together in a group for instructional activities.

Children in Preschool and Kindergarten will not be expected to wear face coverings when they are:

- actively engaged in play outdoors.
- eating or drinking
- taking a face covering break in a socially distanced area.

\*This policy recognizes that young children will have varying abilities to wear a facial covering properly for extended periods of time. The teachers will continue to remind the children in their care to wear their facial coverings properly, maintaining an awareness of the children's needs, and offering breaks from facial coverings when needed.



# Social Distancing

Keeping a distance of six feet or more between people adds another layer of prevention against the spread of COVID-19 by minimizing the chance of coming into contact with the virus through respiratory droplets.

School staff will, when possible, maintain 6-feet of social distance with students and other staff in all school environments including classrooms, hallways, restrooms, faculty work areas, playground, and drop-off and pick-up locations.

CWS parents and adults other than staff will only be allowed to enter the school building in the case of emergencies, or for enrollment purposes by appointment. Prospective parents will be required to maintain social distance and wear a mask. Deliveries and maintenance workers will be accepted by appointment and to a designated area.

# Distance Learning

CWS is working to ensure that our distance learning program, if it becomes necessary, is even better this school year. Distance learning will be provided when students are unable to be in school due to class-wide or school-wide COVID quarantine. Since classes will be kept separate from each other, an individual class will be in 2-week quarantine if a student tests positive in that particular class, and distance learning will be provided to that class. In the case of a state mandate to close schools, distance learning will be provided school-wide. When an individual student misses school for an extended period of time, teachers will provide resources for learning at home.



# During School

- Students will be in outdoor classrooms when at all possible, with indoor breaks from weather and activity. Indoor classrooms will be used for inclement weather.
- No shared equipment or food. All personal items must fit in a backpack and go back and forth with the child each day.
- Warm Hearth Guild (hot lunch program) is currently suspended and will resume as soon it is safe to do so. All Grade School students must have a packed snack and lunch .
- Buddy system for crossing street, eating near a friend and close contact play.
- Following CDC guidelines, we will educate faculty and students on proper handwashing hygiene: the how's (wet, lather, scrub, rinse, dry) and when's of handwashing. We will have multiple stand alone handwashing stations on the exterior campus, including entrances, for washing at arrival and before departure. Each classroom will be assigned designated sinks for use inside of the building. There will be multiple times crafted in our daily schedule for faculty and students to wash hands in addition to the recommended before and after meals, after bathroom use, after blowing the nose, coughing and sneezing. CDC approved hand sanitizer in multiple locations will be available as a secondary resource until an individual can reach a soap & water handwashing sink/station.
- CDC approved disinfectant surface cleaner and wipes used on all surfaces.
- Adults and grade school students implement use of facial coverings when indoor space is required.
- Parents must check temperatures of children before attending school. Staff will also monitor temperatures upon arrival and mid-day.
- Signage posted that no person with a temperature is allowed to enter the building.
- Any child or staff who has a fever over 100 will be immediately sent home and may not return until 72 hours fever-free without the use of fever reducing medicine. We will have a designated room set aside for any child waiting to be picked up. This room will be cleaned after usage. If the individual has had contact with a confirmed or probable case of Covid-19, they must follow isolation procedures according to the health department before returning to school.

# NatureTots

- All Parent and Child classes are currently suspended and will resume as soon as it is safe to do so.

## Preschool

- Preschool A - 8:30-12:30 - 9 - 12 children maximum (depending on ODE guidelines), one lead teacher, one assistant teacher. All children requiring After Care will be in this group and will stay for lunch. Lunch provided by parents. Children not requiring After Care will leave at 12:00.
- Preschool B - 8:30-12:00 - 9 - 12 children maximum (depending on ODE guidelines), one lead teacher, one assistant.
- School provides snack (individual, pre-packaged).
- Students must come to school with a clean water bottle.
- Morning Care is offered in individual classes beginning at 7:45 a.m. for a limited number of children. No Lunch Bunch offered to any child, with the exception of those staying for After Care.

## Kindergarten

- Kindergarten A - 8:30-12:30 - 18 children maximum, one lead teacher, one assistant teacher. All children requiring After Care will be in this group and will stay for lunch. Lunch provided by parents. Children not requiring After Care will leave at 12:00. School provides snack (individual, pre-packaged).
- Students must come to school with a clean water bottle.
- Morning Care is offered in the class beginning at 7:45 a.m. for a limited number of children. No Lunch Bunch offered to any child, with the exception of those in After Care.
- Kindergarten B - 8:30-12:00 - 18 children maximum in each session, 1 lead teacher and 1 full time assistant. School provides snack and water. No After Care or Morning Care.

# Cleaning Plan

## DAILY CLEANING

All common areas will be cleaned and disinfected 5 days/week by City Wide Maintenance. This includes but is not limited to:

- Hallways
- Stairwells
- Restrooms
- Entryways
- Elevator
- All door handles used in these areas

## DAILY CLEANING OF FREQUENTLY TOUCHED SURFACES

Cleaning and use of disinfectant will be done on frequently touched surfaces 3 times/day including:

- After snack by facilities team
- After lunch by facilities team
- At the end of day by City Wide Maintenance

Frequently touched surfaces include:

- Door handles
- Stair rails
- Handrails
- Soap dispensers
- Alcohol sanitizer dispensers
- Toilet handles
- Faucet handles

# Cleaning Plan

## CLEANING & DISINFECTANT

Cleaning and disinfecting will be done using the following approved cleaners:

- Buckeye Sanicare LemonQuat EPA Reg# 47371-131-559
- Buckeye E23 Neutral Disinfectant EPA Reg# 47371-129-559
- Buckeye Symmetry Foaming Hand Sanitizer
- Flexwipes Disinfectant Wipes

## PROCEDURE FOR CLEANING AFTER A CONFIRMED CASE

The following steps will be taken for deep cleaning after a confirmed case:

- Confirm and isolate infected areas
- Cleaning staff will put on necessary PPE (mask, gloves, apron)
- Remove all soil from isolated area (sweep and wipe all areas, mop the whole area with E23 neutral disinfectant)
- Use a mister to blanket area with Lemon Quat (Quaternary Ammonia)
- Dispose of contaminated PPE
- Cleaning staff will wash and disinfect themselves.

Bodily fluid cleanup:

- custodial staff will have a Bodily Fluid Clean Up kit ready that includes:
  - Vinyl gloves
  - Scoop and scraper
  - Chlorinated fluid control solidifier
  - Antiseptic handwipes
  - Germicidal surface wipe
  - Trash bags
  - Aprons
  - Booties

# Events & Gathering Policy

At this time, community events & gatherings present too many risks that could compromise the health of students, faculty, and families which increases the likelihood of a mandated school wide closure or temporary closure of in person learning. Since our primary goal is to provide in person learning 5 days per week for as much of the 2020/21 school year as possible, all CWS community events and gatherings will be shifted to a virtual or at-home experience for the 2020/21 school year. This policy will aid in contact tracing, limit potential family/class/school wide quarantines, and eliminate non-essential risks that come with gathering in large groups and mixing classes.

Gatherings include:

- Assemblies (plays, concerts, etc)
- Fundraising Events
- Festivals & Faires
- Parent Conferences & Parent Education Events
- Open Houses
- Board, PA, and Committee Meetings
- Field trips\* to indoor or heavily populated locations that require navigating large crowds, increased interactions with strangers and unpredictable circumstances
- Any other student, parent, or community gatherings hosted by CWS

\*Highly managed field trips for students to settings that allow for safe distancing (such as nature preserves or isolated outdoor locations) can be included as part of the educational experience.

# Transportation

Parents will provide transportation to and from school.

Under Ohio law parents may request transportation service from their public school district and each district has their own procedures for determining eligibility and processing such requests. Registered students in the Cincinnati Public Schools public school district who qualify for transportation may submit a request to be considered for yellow bus service, metro bus service or payment in lieu of service. Cincinnati Waldorf School requested that our Office Coordinator be copied on the submission of requests to CPS and fewer than 30 were received. When CPS provided yellow bus service to CWS in years past there was a requirement of a minimum daily ridership of 44 students in order for a yellow bus route to be assigned, however, the district may change such policy at any time. All eligibility and routing determinations for the district are made solely by Cincinnati Public Schools and are expected to be announced in August. It was explained at the most recent CPS Transportation Symposium that, due to social distancing requirements, it is unlikely the district will have enough yellow buses to spare for servicing non-public schools this year. The district also explained that they would be sending letters to all families registered in the district to notify them of the need to submit a request for the 2020-2021 school year in order to be considered for service. CWS published a reminder to parents on this in Waldorf Weekly about the deadlines listed in the letter and invited parents to copy our Office Coordinator on the submission of their requests. We suspect that those who requested service, if deemed eligible, will be issued either a Metro bus pass or payment in lieu of transportation. CPS Transportation will be holding another Symposium on July 21st in which they intend to be "sharing how the District is determining the method of transportation for eligible students and how we plan to reinforce safety protocols put in place by the state of Ohio's Governor Mike DeWine. In order for us to provide service demands for SY 20-21 during this pandemic, we must change many of our current practices/procedures." If you missed the deadline to submit your request for service in time to receive a determination from CPS prior to the first day of school, you can still submit a request. Your determination and any service offered and accepted may simply be delayed. Please remember to copy our Office Coordinator on requests submitted so our school has a record of your request and feel free to reach out with any questions. Parents are encouraged to visit the website for their district of residence or reach out to the district office for more information on requesting transportation in other districts. Ohio Department of Education also provides a long, helpful list of Frequently Asked Questions regarding Transportation on their website here.

# CWS Auxiliary Team's Return-To-School Plan

Our goal, as a team, will be to promote daily best practices to protect the health and safety of all members of the school community while providing access to equity in education. By following the Health and Safety Guidelines provided by the Ohio Department of Health and the local health department during our return to the 2020-2021 school year, we will collaborate to ensure children are provided an educational environment designed to effectively protect against the spread of COVID-19 and minimize the disruption to teaching and learning.

## Operating Efficiently, Effectively, and Responsibly

- Team Collaboration
  - Weekly team meeting to prepare and review procedures
  - Review students' best interests and customize to student needs
- Intervention Room Capacity
  - Small Group Size
    - One-on-one learning to promote physical distancing in the intervention rooms
- Multiple Layers of protection
  - Face covering/face mask worn by student and instructor
  - Protective freestanding desk shield
  - Good hand hygiene: frequent hand washing and the use of hand sanitizer
- Frequent Sanitation
  - Disinfect surfaces and learning tools pre and post learning sessions
- Student Transitions
  - Auxiliary staff will transition students to and from intervention rooms
  - Scheduling options to minimize movement and interactions
  - Transitions will promote social distancing
  - Transitions will be deserving of deliberate design
- Parent/Family Communication, Collaboration, and Support
  - Frequent two-way communication and collaboration: needs, expectations, and supports
  - Parent/Family supports provided per individual student needs
  - Multiple methods to ensure access: email, phone, and video conference



# CWS Auxiliary Team's Return-To-School Plan

- Student Referrals, Testing, and Reevaluation
  - In person testing with School Psychologist and Intervention Specialist
  - ISP and ETR meetings will be held via video conferencing (ZOOM)
- Specialized Instruction
  - Specialized instruction will follow federal and state requirements
  - Delivery of services will be provided/offered via in person during the school day, video conference, and through technology platforms
  - Assessment and progress monitoring will be routinely collected through data using research-based instructional programs, observation checklists, and student work samples
  - Documentation of services will be kept by the service provider

## Ohio Public Health Advisory System Rankings & CWS Distance Learning Program

CWS Lower School (Preschool to Grade 8) will go to the Distance Learning Program for (at least) two weeks in the following scenarios:

- 1- If we have one occasion\* of a student or staff member with a confirmed COVID-19 case\*\*, and Hamilton County is "red" or "purple."
- 2- If we have two occasions\* of a student or staff member with confirmed COVID-19 cases\*\* in two different classes, and Hamilton County is "orange" or "red" or "purple."
- 3- If we have three occasions\* of a student or staff member with confirmed COVID-19 cases\*\*, in three different classes, regardless of Hamilton County's classification.

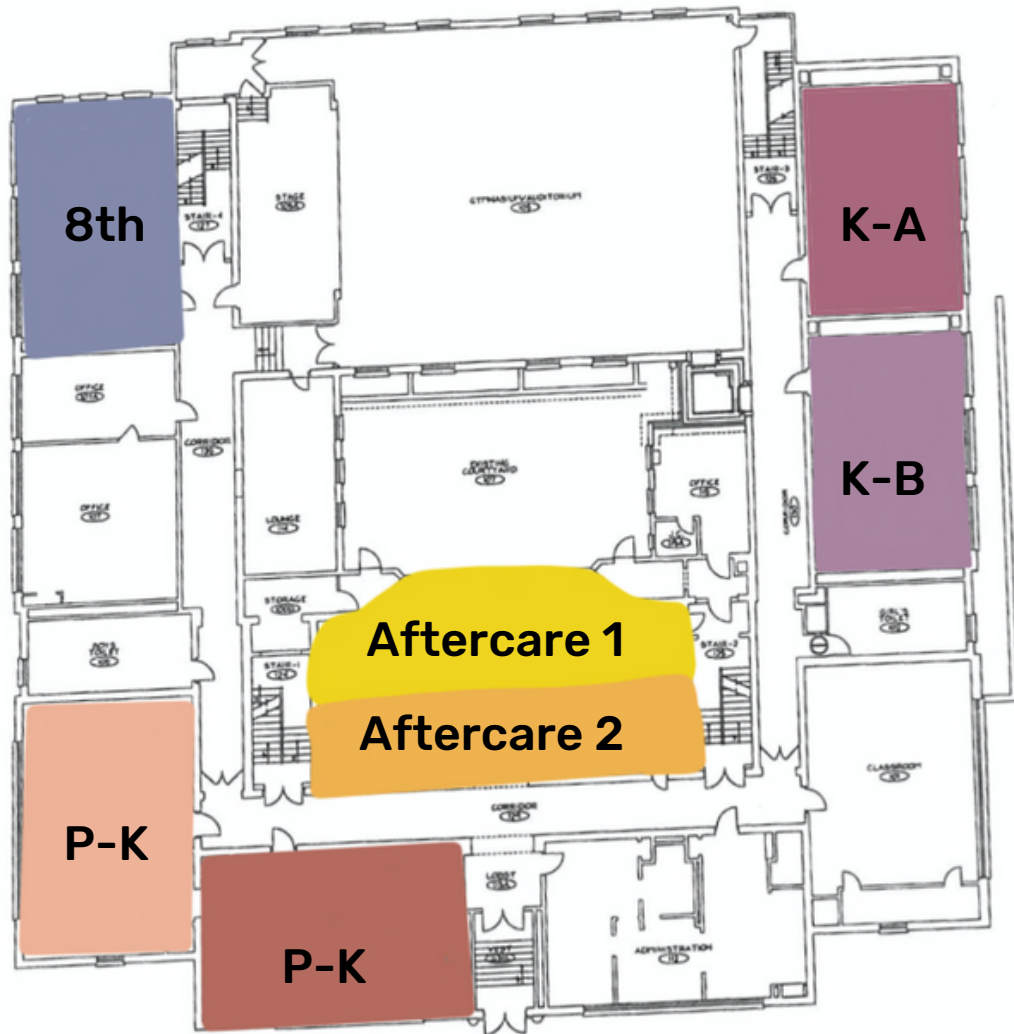
\*Siblings in one family would be considered one occasion.

\*\*"Confirmed cases" means confirmed by a test or by a physician (not a parent.)

With one or more confirmed cases in any specific class, that class will go to the Distance Learning Program.

The CWS High School- Madisonville campus, the whole school is considered one class, and will go to the Distance Learning Program with one or more COVID-19 cases.

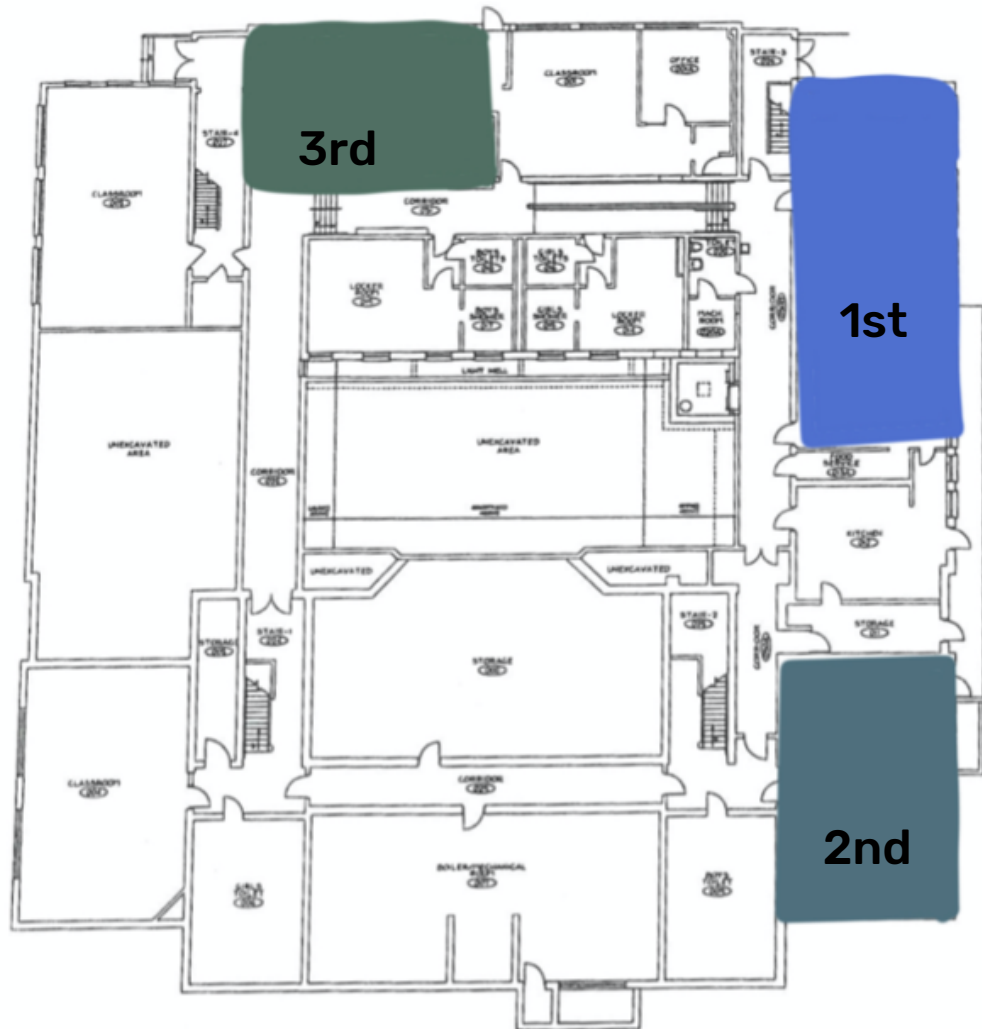
# Building Maps



The floor plan shows three levels of a school building. The 7th floor (top) features a large central courtyard area and a classroom on the left. The 6th floor (middle) has a large central classroom area, a courtyard area, and a classroom on the right. The 5th floor (bottom) has a large central classroom area, a courtyard area, and a classroom on the right. The plan includes labels for classrooms, courtyards, and stairs.



# Building Maps



**BASEMENT LEVEL**  
PLANS NOT TO SCALE

# Building Maps

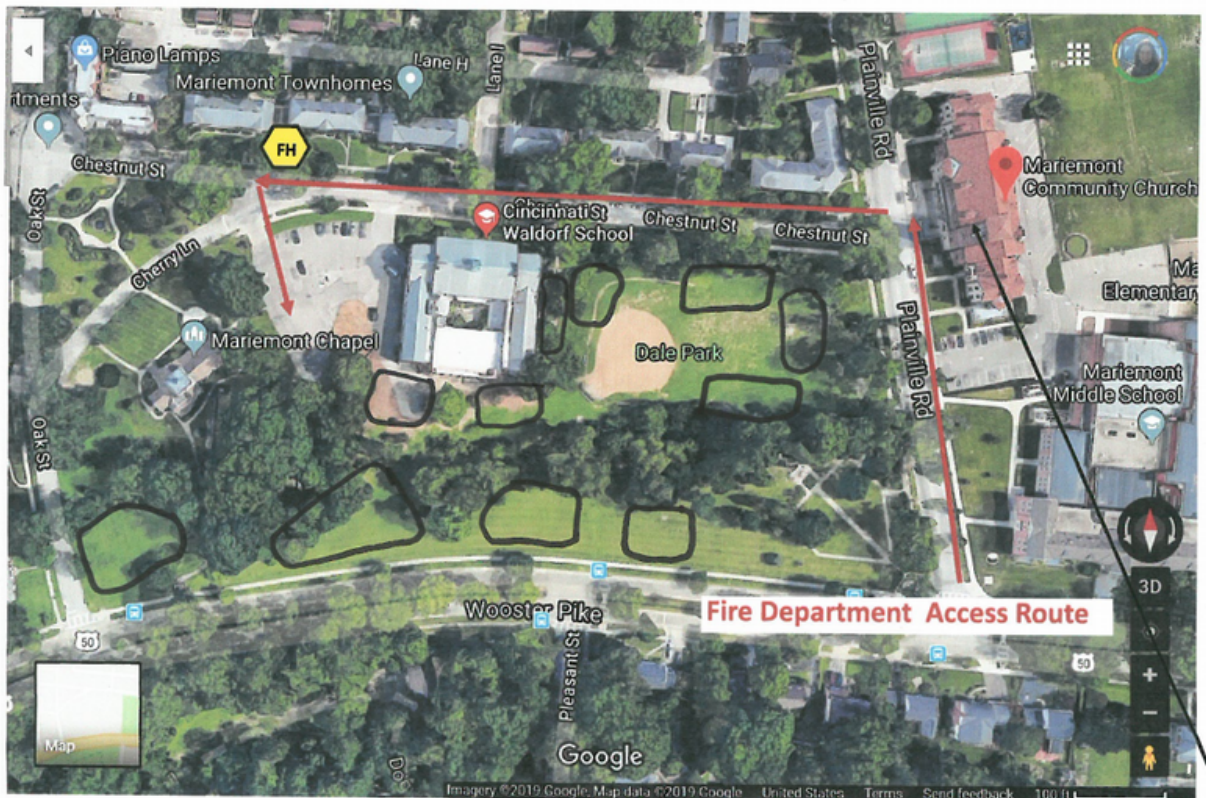


Fire Hydrant (across the street)

No Fire Hydrants Exist on The Property

## CINCINNATI WALDORF SCHOOL SITE PLAN

IRN: 134338 Telephone(513)541-0220 / Mobile (310)804-0145



**MARIEMONT COMMUNITY CHURCH CHAPEL**  
6713 Cherry Lane Cincinnati, OH 45227

**CINCINNATI WALDORF SCHOOL**  
6743 Chestnut Street Cincinnati, OH 45227

**MARIEMONT COMMUNITY CHURCH PARISH CENTER**  
3908 Plainville Road Cincinnati, OH 45227