



Cincinnati  
**Waldorf  
School**  
cinciwaldorf.org

## **Family Handbook 2024-2025**

The Cincinnati Waldorf School

6743 Chestnut Street,  
Cincinnati, Ohio 45227

School Phone: 513.541.0220  
School Fax: 513.541.3586

September 2024 Edition



*Welcome to*  
**The Cincinnati Waldorf School**

**Our Mission**

*The Cincinnati Waldorf School inspires students through experiential education that awakens resilience, compassion, independent thinking and initiative.*

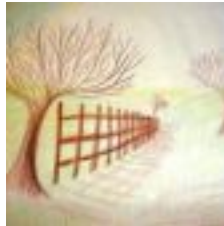
**Welcome**

The Faculty and Board of Trustees of The Cincinnati Waldorf School (CWS) welcome your family into our community! As a part of a worldwide movement of more than 1,000 Waldorf schools, CWS is proud to provide Waldorf education in Ohio and to the families of the greater Cincinnati region.

The Waldorf school curriculum supports the inner development of the student as they journey from the imaginative world of early childhood to the adult world of clear intellectual thought. Our dedicated faculty work out of the educational methods developed by Dr. Rudolf Steiner, who provided the inspiration for the Waldorf movement beginning with the first Waldorf School in Stuttgart, Germany in 1919. Waldorf education is based upon the work of Dr. Rudolf Steiner (1861-1923), an Austrian-born philosopher, scientist and educator. Steiner's educational insights are rooted in the concept of the human being as a three-fold spiritual individual whose growth from childhood to adulthood depends on awakening the head, the heart, and the hands- that is-cultivating capacities in thinking, feeling, and willing. Steiner called his study of humankind "Anthroposophy," taken from the Greek roots meaning "wisdom of man." Although this philosophy is not taught in the classroom, our staff studies Steiner's writings to better understand how to provide an education for today's youth which will empower them to meet the challenges of the future, to be true thinkers, compassionate, and willing to serve others.

The Cincinnati Waldorf School was founded by a group of dedicated parents in 1973 and currently has students enrolled in preschool through grade twelve. Our faculty consists of a very talented group of specially trained Waldorf teachers and administrators who are dedicated to Waldorf education and its philosophy.

In choosing this school, families have made a statement of support for our educational philosophy. This handbook is intended to familiarize your family with how the school operates, to inform you about its schedules and procedures, and to facilitate your involvement with the school. We hope that referring to this handbook will help your family both find an easy entry into our Waldorf school community and continue to participate in it.



## Our Campus

The Cincinnati Waldorf School is located in the historic village of Mariemont. CWS purchased our school building in 2013 and it is the first time in our school's history that we have owned our facility. Our school building was originally built in 1920 and housed the Mariemont Elementary School most commonly known then and still today in the neighborhood as the "Dale Park School". In 1950, a major addition was built to add classrooms, a cafeteria and gymnasium. CWS is dedicated to the preservation of our historical building as we grow into our space and create our home.

In 2024 the Cincinnati Waldorf High School (Grades 9-12) relocated from the original high school building in Madisonville into the existing lower school building in Mariemont. CWS is now located under one roof in Mariemont and encompasses our Early Childhood programs (Preschool-Kindergarten) as well as our Grade School (Grades 1-8) and our High School (Grades 9-12).

## A Taste of Waldorf

### Morning Verses

#### Early Childhood Blessing:

Good morning dear earth,  
Good morning dear sun,  
Good morning dear stones,  
And flowers everyone.  
Good morning dear buzzing bees and the birds in  
the trees,  
Good morning to you and good morning to me.

#### Morning Verse-Grades 1-4:

The sun with loving light  
Makes bright for me each day.  
The soul with spirit power  
Gives strength unto my limbs.  
In sunlight shining clear,  
I do revere, oh God,  
The strength of humankind,  
Which thou so graciously  
Hast planted in my soul,  
That I with all my might,  
May love to work and learn  
From Thee stream light and strength

To Thee rise love and thanks.-*Rudolf Steiner*

#### Morning Verse-Grades 5-12:

I look into the world  
In which the sun is shining,  
In which the stars are sparkling,  
In which the stones repose.  
Where living plants are growing,  
Where beasts do feel and move,  
Where human beings, soul-gifted,  
Give the spirit a dwelling place.

I look into my soul  
That lives within my being  
The world creator moves  
In sunlight and in soul light,  
In wide world space without,  
In soul depths here within.  
To Thee Creator-Spirit  
I will now turn my heart  
To ask that strength and blessing  
For learning and for work may live and grow  
In me.

-*Rudolf Steiner*

### Sample School Day

#### Our School Day

Early Childhood( 8:30 am-12:00 pm)

Grade School:

- Grades 1-3 (8:30 am-3:00 pm)
- Grades 4-8 (8:30 am-3:15 pm)

High School (8:30 am-3:30 pm)

Early Aftercare (12:00-3:00 pm)

Late After Care (3:15-5:30 pm)

### Sample Daily Rhythm

#### Early Childhood Sample Daily Rhythm

- Preschool and Kindergarten Drop Off is 8:00-8:30 am
- Preschool and Kindergarten start their day at 8:30 am
- Program is designed by the teacher that will include creative play,  
painting, beeswax, baking, drawing, handwork
- Snack
- Circle and story/rest
- Outdoor play or walks
- Goodbye – 12:00 noon

## **Grade School (Grades 1-8) Sample Daily Rhythm**

- Grade School Drop Off is 8:00-8:30 am
- Grade School day begins at 8:30 am\*
  - \*Grade school students should arrive at school by 8:15 am to adequately prepare for class to begin at 8:30 am. However, the car line will run until 8:30 am to accommodate families who experience unexpected delays.
- Main lesson
- Snack/recess
- Subject classes
- Lunch and recess
- Subject classes
- Dismissal -
  - Grades 1-3 (3:00-3:30 pm)
  - Grades 4-8 (3:15-3:30 pm)

## **High School Sample Daily Rhythm**

- High School Drop Off is 8:00-8:30 am
- High School day begins at 8:30 am
- Main lesson
- Subject classes
- Lunch
- Subject classes
- Dismissal -3:30 pm

## **Learning more about the Waldorf Curriculum**

### **NatureTots**

These classes are held at our beautiful Mariemont campus and most of the activities will take place outside. Outdoor activities include woodland walks, as well as climbing, digging, raking, gardening, jumping and crawling in the early childhood play yard. Families will also take part in guided discussions covering such topics as how to get children outdoors and creating healthy outdoors spaces for the young child.

### **Preschool & Kindergarten Curriculum**

Young children are filled with wonder. They see beauty and purpose in everything. They are curious about all that comes to meet them. Preschool and Kindergarten teachers create a beautiful environment and rhythm in which this natural curiosity and wonder can be fostered. Children learn about life first by seeing and then by imitating what they see. Therefore, great care is taken to surround them with as many life-filled experiences as possible. In a warm, homelike atmosphere, the child's inherent abilities can unfold through painting, storytelling, music, poetry, handcrafts, walks, baking and free play. Waldorf education consciously builds a strong foundation during these years for the later intellectual growth of the child, but avoids the actual teaching of academic subjects at this time.

Imaginative play in the early years transforms into free and creative thinking, decision making during adulthood. When young children are nurtured by a circle of teachers who lead the student to an appreciation of the goodness, beauty and wisdom within the world,

natural and healthy human development is set into place and can impact a child for a lifetime.

### **Grade School Curriculum**

In the grade school years children understand the world through their feelings. During these years the teacher must be an artist, transforming dry intellectual facts into great imaginative pictures, deeply felt experiences and all-engaging activities. Waldorf education recognizes that the second seven years of a child's life requires a relationship with teachers who have their confidence and gives continuity to their lives, providing an authority that the children can love and respect. The class teacher joins our subject teachers to create a circle of teachers with each child in its center. This circle of teachers provides a link between home and school, moving with the children through the grade school years. The class teacher oversees the main lesson, a two hour period each morning where the teacher together reviews, practices and presents new material in a given subject for a three to four week block. Our special subject teachers instruct in their area of expertise such as music, foreign language, art or Eurythmy. In addition to the value of providing a stable teacher-child-relationship, having a consistent circle of teachers in a child's life means less time is spent adjusting to a new classroom situation each year.

A Waldorf education offers an exceptional humanities curriculum, beginning in first grade with fairy tales from many lands. Each year the curriculum changes-for example, in fifth grade, students study ancient cultures of India, Egypt, Persia, Mesopotamia, and Greece. The curriculum provides the background for the study of history and is presented through narrative and excerpts from original texts. By experiencing these cultures through their legends and literature, the children gain flexibility and an appreciation for the diversity and development of humanity.

The sciences are taught experientially. The teacher sets up an experiment, calls upon the children to observe carefully, ponder, discuss, and then allows them to discover the conclusion-the law, formula, etc. Through this process, rigorous, independent thinking and sound judgment are encouraged.

Within the Waldorf school curriculum, young children are introduced to letters through story images. First graders hear stories and draw pictures - a process accompanied by phonetic work in songs, poems, and games, which help to establish a joyful and living experience of language. Throughout the grades, texts taken from the rich humanities curriculum provide material for reading practice.

All branches of mathematics are taught at Waldorf schools. The first lessons in arithmetic are presented in story form. Number work is supported through rhythmic movement, running, clapping and jumping. As the children grow, the study of math becomes more complex.

The arts - handwork, drama, painting, music, drawing, movement, modeling, etc. are integrated into the entire academic curriculum, including mathematics and the sciences.

The Waldorf method of education, through the arts, awakens imaginative and creative powers, bringing vitality and wholeness to learning. The children begin to play string instruments in grade four.

Foreign languages, beginning in the first grade, give the children insights into and other cultures within the world. The Cincinnati Waldorf School currently offers Spanish, Mandarin and Danish.

### **High School Curriculum**

In High School, main lesson blocks are the heart of the curriculum, where one main subject is focused on for three to four weeks at a time for two hours daily. The rest of the day is filled with specialty subjects where students are immersed in courses such as math, music, language, chorus, movement, and art.

Sciences are primarily taught in the laboratory and in the field, where observation and experimentation with the phenomena are the basis for the development of the laws and theories that modern scientists use to make sense of their observations.

In the humanities and social sciences, students are taught using primary source materials: the original versions of the great works of literature, and original historical documents.

Writing is an important part of the curriculum in all subject areas as students keep notes, laboratory records, and journals of their observations and use them to write reports, essays, and poetry.

Work in the arts supports the academic curriculum by developing the capacity to solve problems creatively.

Through the creative arts, we aim to help students cultivate imaginative thinking, perseverance, and attention to detail. Practicing the performing arts develops self-discipline, focus, and the ability to work effectively in a group.

### **School Structure**

The Cincinnati Waldorf School is an independent school that exists through the special efforts of a large and increasingly diverse community of people. Coordinating and directing these efforts is the work of three leadership groups in the school:

- The College
- The Board of Trustees
- The Administrative Team

These groups strive to maintain open and clear communication with families.

### **Faculty**

Meeting regularly, the full faculty includes all CWS employees. Full Faculty Meetings are utilized for communication, faculty education and development. Topics may range from course content and curriculum to discussions about diversity to input into the academic

schedule, school policies and procedures, community events, etc.

### **The College**

The Cincinnati Waldorf School College is composed of teachers and administrators who consciously hold the larger spiritual-cultural picture of the school. They are charged with deepening the school's relationship to a strong Waldorf pedagogy by providing oversight and support to the Waldorf tenets of child development based on a living knowledge of human nature. The College has the responsibility to make major school decisions regarding the pedagogy of the curriculum, the culture of the school, and the quality of the teaching faculty, including their hiring, placement, and dismissal. The College comprises faculty members who are invested in the longevity of the school and the integrity and livelihood of its teachers. The members meet at least weekly, and make decisions out of deliberative discussion and consensus.

### **Administration**

The Administrative Team is composed of the Administrative Director, Enrollment Director, Business Manager, Finance Director, Community Development Director, Office Coordinator, Administrative Assistants and Facilities Manager.

A sample of the duties of the administrative team include:

- Managing and directing the flow of information
- Managing enrollment and public relations
- Providing general student first aid
- Managing the school's finances
- Coordinating care of the building and grounds
- Handling general administrative work
- Keeping student and personnel records

### **Board of Trustees**

The Board of Trustees oversees all legal and financial school matters. The Board of Trustees is the legally recognized entity (by the State of Ohio) responsible for the school. Included in the board are the President, Vice-President, Secretary, Treasurer, the Administrative Director, the Faculty Chair, representatives of the faculty, parent body, and the greater community. For nominated positions on the Board, nominations for new members are considered each year. Terms are two years and new members are selected annually. Board By-laws are available for those interested. The Board meets once per month. All community members are welcome to attend Board meetings. Board meeting minutes are also available by request on the school website.

### **The Leadership Council**

The Leadership Council is composed of each of the department chairs: the Faculty Chair, College Chair, Early Childhood Department Chair, Grades Department Chair, High School Chair, Board President and Administrative Director. It may call in others, on an as-needed basis. The Leadership Council coordinates agenda setting and communication between the Faculty, Board and Administration.



The Leadership Council [LC] serves as a unifying and agile group to represent the perspectives from the Teaching Faculty, the Administrative Team, and the Board of Trustees. The group comprises the chairs of all CWS departments who join together to field issues that have broad impact on the school and community, to address matters that require urgency, tact, and confidentiality, and to gain a shared vision for actions that best serve the interests of the community and its individuals. The Leadership Council works in concert with all departments of the school to prioritize and delegate matters of importance.

## **Committees**

At CWS, much of the work we do together is collaborative and inspired, coordinated and executed by committees. Each committee is a branch of a larger leadership body (College, Board and Departmental). The larger leadership bodies delegate work to committees made up of small groups, typically ranging from 3-5 members and composed of CWS faculty with some Board committees membering with parents as well. Each committee has a driver who serves as a chairperson and a charter that describes the committee work and purpose.

## **Admissions**

### **Values & Inclusiveness Policy**

Waldorf education acknowledges the spiritual nature of each individual, without teaching any doctrine or dogma. The Cincinnati Waldorf School is a non-religious school. The aim is to help the developing human being find a way to true morality, with reverence for humanity and the natural world. Students over the course of their education will be introduced to diverse cultures and religions through story, celebrations and music.

### **Cincinnati Waldorf School Non-discrimination Policy**

The governing board of the Cincinnati Waldorf School is located at 6743 Chestnut St, Cincinnati, Ohio 45227 and has adopted the following racial nondiscriminatory policies.

The Cincinnati Waldorf School recruits and admits students of any race, color, national or ethnic origin, religion, gender, gender identity, gender expression, sexual orientation, or weight to all the rights, privileges, programs, and activities generally made available to students at the school.

In addition, the school will not discriminate on the basis of race, color, national or ethnic origin, religion, gender, gender identity, gender expression, sexual orientation, or weight in administration of its educational policies, admissions policies, employment, scholarship and loan programs, and athletic and other school administered programs.

The Cincinnati Waldorf School will not discriminate on the basis of race, color, national or ethnic origin, religion, gender, gender identity, gender expression, sexual orientation, or weight in the hiring of its certified or non-certified personnel.

Any persons having knowledge of racial discriminatory practices in the administration of its educational policies, admissions policies, employment, scholarship and loan programs, and athletics and other school-administered programs should contact the Ohio Department of Education, Quality School Choice and Funding, Nonpublic Educational Options Programs, 25 South Front Street, Mail Stop 309, Columbus, Ohio 43215.

To uphold this policy, the Cincinnati Waldorf School will strive to provide a safe learning environment free of discrimination and harassment, and to promote the educational and social integration of all students.

### **Gender Identification Policy**

Students can choose to use whatever bathroom with which they identify.

### **How to File a Complaint:**

In the event a person feels their issue regarding the Cincinnati Waldorf School [Early Childhood Preschool, Kindergarten, Lower School Grades 1-8 or the High School] is not being adequately addressed at a local level, they can file a formal complaint by contacting the ODE directly.

Ohio Department of Education  
Office of Early Learning and School Readiness  
25 South Front Street  
Columbus, Ohio 43215-4183  
(P) 877-644-6338

[contact.center@education.ohio.gov](mailto:contact.center@education.ohio.gov)

All complaints made will be investigated before the issuance of a charter to the said school.

### **Admissions Process**

CWS uses a student's birth date as a guide to admitting students into our various programs. Children should be the following ages on June 1<sup>st</sup>, preceding the September that they join a specific class:

- **NatureTots:** 16 months to 3 years old
- **Preschool class:** 3 years old
  - *For entering the preschool there is a provision for individual assessment of children whose three-year birthday falls between June 1 and December 31*
  - *All children entering the preschool program must be completely potty trained (see "Potty Trained" policy below)*
- **Kindergarten class:** 4 years old
- **First Grade class:** 6 years old
- **Ninth Grade class:** 14 years old

In the spring of each year, age-eligible students are considered for subsequent programs. Current enrollment in a CWS program does not guarantee acceptance. Nature Tots class children must show readiness for the preschool class. Kindergarten children must show readiness and aptitude for first grade. Grade eight students must show readiness in academic, social, and emotional aptitude for high school.

Sometimes, while specific programs have been beneficial to the student's developmental process, further programs at CWS may not meet that student's needs for growth and development, or the school may not be able to offer the appropriate educational support services. Ideally, both parents and teachers decide what is best for the student. However, the school reserves the right to determine the final decision.

In order to maintain the integrity of the Waldorf education, all children enrolled at CWS must participate in a full program, including main lesson and all subject classes. Faculty and parents together may decide on modifications to help each child succeed to the best of their ability.

With an understanding that each student is a unique individual, bringing specific gifts and challenges to the school, the faculty will determine in the assessment of each incoming child whether the school is qualified to teach the physically, mentally, or emotionally challenged child, or the child with severe disciplinary difficulties.

### **CWS Early Childhood Preschool & Kindergarten Readiness/Criteria**

Admissions in CWS are based on three criteria:

- Developmental/Academic Proficiency
- Social/Behavioral Appropriateness
- Family Commitment & Resources Support.

CWS will determine eligibility for admission through assessment, observation and communication with the family. Excellence in all three areas is preferred. Proficiency in two of three areas is required.

Applicants for our Preschool School/Kindergarten will be accepted in accordance with the admissions criteria above and in the following order of priority:

1. Current CWS student (moving from one program to another)
2. CWS sibling
3. Previous CWS student (returning)
4. Current CWS Nature Tots student
5. Outside applicant with Waldorf Experience
6. Outside applicant with non-traditional education experience
7. Outside applicant

- **Potty Trained Policy**
  - Because of licensing requirements, all students must be potty-trained before enrolling. At CWS “potty-trained” means that a child can self-sufficiently use a toilet for all of their daytime toileting needs, including wiping. While occasional accidents are acceptable, a child who has accidents repeatedly will be re-evaluated for readiness for enrollment.
- **Adjusting to School-*A note to new families***
  - In preschool, kindergarten and the early grades, it is sometimes difficult for children and families to make the transition from home life together into the children's school life. School is where a child's world expands to include peers, academics and the discovery of personal independence. There may be a period of adjustment to ease the process and separation.
  - The next step is for the young child to become more aware of the role school plays in their life. School is a special experience that a child is not always willing to share with their family. In fact, the presence of family members in the classroom sometimes inhibits free participation by the child and may encourage "acting out". Once the initial adjustment to school has taken place it is most helpful to the teachers and beneficial to the children if visiting family members consider the following:
    - Please visit your child's classroom only at times prearranged with the teacher.
    - Even though children sometimes want to bring toys to school from home, problems with sharing often result. Also, some toys do not support the Waldorf curriculum. A special doll or stuffed animal for children at rest time in the After Care Program or with teacher permission is acceptable.

### **CWS Grade School 1st Grade Readiness/Criteria**

Students being considered for first grade must show the ability to:

- Physical and cognitive development
- Bilateral coordination, crossing midlines, short term & working memory, ect.
- Move with the group
- Come when being called
- Be easily redirected
- Be flexible when things do not go the way they want

### **CWS High School Readiness/Criteria**

Eighth grade applicants must seek admission to the Waldorf High School through an interview and the submission of a portfolio to ensure academic, social, and emotional readiness. To receive the most up to date portfolio requirements, please reach out directly to the CWS Enrollment Director.

### **Student Probation Policy**

Any student enrolled at the Cincinnati Waldorf School may be placed on a probationary period based on behavioral, social, or academic concern. The purpose of probation is to alert a student and his or her parent(s)/guardian(s) to serious concerns about either academic performance or behavior.

New students, that is, students enrolled in CWS for the first time, including all incoming first graders, are automatically on a 8-week probationary period pending full admission to our school. At times, the probationary period may be adjusted to a different length of time as determined by CWS. This provisional period may be extended beyond the first 8-weeks at CWS discretion.

Additionally, new students enrolling at CWS for upper grades and high school for the first time, will meet with CWS Faculty to review and sign the 8-week probationary contract.

During a probationary period, faculty may call upon the family for conferences, by telephone or in person, to discuss the child's progress. At any time during the probationary period, the admission of the student is subject to review up to, and including, unenrollment from CWS.

### **Un-enrollment Policy**

CWS expects families to agree to accept the regulations and common ideals of our education and school. In addition, we ask that families agree to work collaboratively with the board, faculty and administration on behalf of their child(ren). The Cincinnati Waldorf School shall have the right to deny any student from attendance, temporarily or permanently, under any circumstances determined in the sole discretion of CWS, including but not limited to:

- Student interference with the health, safety, or educational development of the student or any other student
- Unsatisfactory student progress or conduct
- Past due tuition or other fees owed to the school.
- Actions from parents/guardians that are inconsistent or are not in support of the educational environment, leadership structure and/or are counterproductive to a positive working relationship between CWS and the family.

### **Special School Events**

In Waldorf schools many traditions are brought to the student, in the context of a "world view", to cultivate an appreciation for cultural diversity. Teachers welcome families who want to share their traditions with the students.

Younger children love preparing for special school events by preparing the room, making special food, learning stories, and singing special songs. Nature stories and other tales bring the deeper significance of the season to the children as inner pictures. Celebrations are especially important in helping older children stay in touch with the natural rhythms of the year.

## **Festivals**

Festival celebrations are an important aspect of a Waldorf Education. By participating in them, the student's inner experience of the rhythms of the year is nurtured and a sense of community is cultivated. We encourage all students and their families to participate in these wonderful community events.

When planning festival celebrations the faculty carefully consider the qualities of the season to be celebrated. In the fall when days begin to grow short and darkness increases, we are reminded in the festivals of Michaelmas and Lantern Walk to strengthen our inner forces against darkness through courage, strength, perseverance, and compassion.

We celebrate Winter Garden in December, the darkest month, in a festival of light, where each student walks through an evergreen spiral decorated with representatives of the mineral, plant and animal kingdoms.

With the return of spring, we celebrate rebirth and the budding life of nature. Ancient civilizations all over the world believed that life was contained in the egg. In the classroom, colored eggs, flowers and stories of new life in nature delight the student. May Day is celebrated with great revelry and traditional Maypole singing and dancing.

## **Birthdays**

School Birthdays are always very special days at school. Individual student's teachers will discuss the details of any celebration with families at the start of the school year.

## **Assemblies & Class Plays**

Assemblies and Class Plays are wonderful experiences for students to live into their education and share an outward gift with our community. Class teachers communicate assembly and play dates and all like events are listed in the weekly school newsletter, Waldorf Weekly.

Please note that we ask those who attend any special presentations to watch with attention and respect. When families bring younger children/siblings to these events, parents are asked to accompany and sit with their children at all times. When younger children have reached their capacity for quiet attendance parents should accompany their child to an area away from the event. While in attendance, please be mindful of electronic device usage as it can be a distraction to our students. Please avoid using flash photography, cell phones, computers or other electronic devices during performances.

## **Attendance**

The curriculum is created to promote a rhythmical unfolding of the day, the week and the year that then allows learning to take place in a balanced way. By promoting regular attendance, we allow the student to experience what has been designed for them.

Assemblies and special performance events require the participation of each student in the designated class. Families are asked to schedule appointments and travel around important class and special performance events including events hosted by subject teachers such as Eurhythmy and music concerts.

## **Arrival**

### **Tardy & Absence Policy**

If a student is absent or tardy more than **4 days in a six-week period**, the family will be contacted and may be required to meet with the Educational Support Coordinator and/or Faculty Chair. Special consideration will be given to circumstances such as student illness, medical appointments, family bereavement, religious holidays, and high school visits. The College will consider if the student is progressing appropriately.

More than **ten excused or unexcused absences** accrued in a given semester can also impact the student's enrollment at the school. The same process of review mentioned above will be followed to determine the student's enrollment at CWS.

### **What To Do If Your Student Will Be Absent or Tardy?**

#### **Early Childhood (Preschool & Kindergarten) Absence Policy**

- Please communicate by email, text or phone with the EC teacher and the main office by 8:30 am if your EC student will be absent or tardy.
- If a student is picked up from school anytime before EC dismissal, the family member/guardian must stop in the main office and sign the student out for the day.

#### **Early Childhood (Preschool & Kindergarten) Tardy Policy**

Since there is a need to support a gradual and flexible approach for the younger child, in the Kindergarten and Preschool late arrivals will be noted in the attendance record and teachers will contact the family if it is a chronic situation.

#### **Grades (1st-8th) Absence Policy**

When a student is absent:

- Contact the main office and the student's teacher before 8:30 am. If there is no communication about a student absence, the school will contact parent/guardian to verify the safety of the student.
- If a student is picked up from school anytime before school dismissal (3:00-3:30 pm) the family member/guardian must stop in the main office and sign the student out for the day.
- On the day that your student returns to school after an absence please email or bring in a note including the child's name, the date, the parent/guardian's signature and the reason for the absence.

- If a child is absent for 3 days or more in a row, a physician's note must be received when the student returns to school.
- In Grades 4-8, missed work from an unexcused absence must be fulfilled.
- Please schedule standard medical and dental appointments during after school hours.
- Any family choice absences for students must be communicated to the school and the student's teacher ahead of time/before the day of the absence.

**Excused Absences include:**

1. Illness
2. Serious illness or death of immediate family member
3. Mandated medical appointments\* (i.e., medical procedures or specialist appointments that cannot happen at any other time) accompanied by a physician's note (or other relevant medical personnel's)
4. Observance of religious holidays
5. Illnesses or conditions that the school mandates that students to stay home from school (e.g., conjunctivitis, lice, pertussis, etc.)

The parent/guardian must call on or before 8:30 am on the day of the absence, and the parent must send an email or note written by the parent/guardian to the main office upon returning to school. If the office does not receive a note, the absence is considered unexcused.

**Grades (1-8) Tardy Policy**

It is imperative that parents ensure that their student arrives on campus by 8:15 am to allow them to adequately prepare for class to begin at 8:30 am. Car line will run until 8:30 am to accommodate families who experience unexpected delays.

- The school day begins promptly at 8:30 am.
- **A student who arrives after 8:30 am is Tardy** and must stop by the front office to get a Tardy Slip prior to proceeding to their classroom.
- Class teachers in **grades 1-3 have outdoor time from 8:00-8:30 am to start the school day**
- Class teachers in **grades 4-8, start class instruction/begin teaching students at 8:30 am every day.**
- If you know your child is going to be late, please call the main office before 8:30 am. Communicate with your class teacher as well.

**High School (Grades 9-12) Absence Policy**

**Timeliness and Attendance:** Because of the interactive and experiential nature of Waldorf education, it is essential that students be present and on time for each class. Arriving late is disruptive and discourteous. Students are expected to remain in class for the duration of the period unless given permission to leave. The flow of a lecture, the understanding of a concept and the mood of a class are all disrupted when someone enters or leaves the classroom.



- The parent/guardian must contact the main office and the student's teacher on or before 8:30 am if a student is going to be absent for part or all of the day. If there is no communication about a student absence, the school will contact parent/guardian to verify the safety of the student.
- The family must call on or before 8:30 am the day of the absence in order for it to be considered an excused absence.
- If a student is absent more than 3 consecutive days, a doctor's note upon the student's return is needed in addition to the daily calls for absence.
- If the parent/guardian does *not* call in, and there is no doctor's note for absences exceeding 3 days then the student will be given no credit for the work that was missed and will only get partial credit for any tests needed to be made up at the discretion of the teacher.
- Prolonged absences (for any reason) may severely impair the ability to attain the objectives of courses, and may result in loss of credit.
- **At the discretion of the instructor, if a student is absent for more than 15% of any given course, the student may not be given credit for the course.**
- If a student is **absent for 30% of the class (30% of a block or 30% of a quarter of a track class), the student will automatically fail the course.** *(Parents may initiate an appeal for review by the faculty to consider unique circumstances.)*

#### **High School (Grades 9-12) Tardy Policy**

- The school day begins promptly at 8:30 am.
- **If a student is tardy, then the student must report to the Front Office before going to class.**
- A pattern of frequent tardiness (30% of the time) is cause for concern and will result in a conference to discuss and remedy the difficulty.
- At the discretion of the instructor, a student who is late more than 30% of the time to a course may not receive credit.
- **A student who is late more than 50% of the time to a course will NOT receive credit for the course.**
- We encourage students and families to schedule medical appointments and family vacations so that students do not miss school.
- If a student is picked up from school anytime before the school day is over/dismissal (3:30 pm) the parent/guardian must communicate this to the main office in advance.
- If a student is of driving age a parent/guardian must notify the school prior to the student leaving early.

**Unusual events for prolonged absence (bereavement, etc):** If a student knows in advance that they will be absent for three or more days, the parent/guardian must notify the main office by phone or email, at least one week before the absence. It is the student's responsibility to make up any missed work due to absence or tardiness.

#### **Dismissal**

## Early Childhood (Preschool & Kindergarten) Dismissal

- Preschool and Kindergarten children not staying for Early After Care are dismissed between 11:45 am-12:00 pm.
- Families are to park & walk to pick up their children from the outdoor play space and acknowledge their departure to the teacher.

## Grades (1-8) Dismissal

- Grade school children are dismissed at designated times:
  - Grades 1-3 dismissal starts at 3:00 pm
  - Grades 4-8 dismissal starts at 3:15 pm
- If you have a student in grades 4-8 who is dismissed at 3:15 pm, please delay arriving for the carline pick up to give the 3:00 pm dismissing students a chance to be picked up reducing the amount of waiting traffic in the parking lot carline. **You will be asked to leave the carline and come back at 3:15 pm** when arriving too early for a grade 4-8 student.
- Families may utilize the parking lot car line to pick up their student or park & walk for dismissal. Once the children are with their families, the school is no longer responsible for them.
- To dismiss a child to someone other than a parent/guardian PERMISSION MUST BE IN WRITING AND ON FILE in the main office. The family's written permission must include both the name of child(ren) and person picking up the child(ren).

## Grade School Late Pickup Policy

If unforeseen circumstances prevent you from picking up your grade school student promptly at dismissal time, inform the Main Office as soon as possible. Grade school students who are not picked up by 3:30 pm will be placed in the After Care Program until a parent/guardian arrives to pick the student up. A late charge of \$5.00 for each fifteen-minute interval will be added to tuition bills. After Care Program fees may also apply.

## High School Dismissal

- Students are self-dismissed at 3:30. All students will exit the building by 3:40 unless they are approved for staying for an afterschool club, tutoring, or event.
- High School faculty oversee dismissal until 3:40. At that time and when students exit the building, there is no more supervision and are now the full responsibility of the student's family.
- Students can be picked up by families in the parking lot, walk or bike home, take the bus, etc.

## General Arrival/Dismissal Safety

- Parents/guardians of younger children who park & walk for arrival/dismissal must

accompany their student to and from the designated area on campus.

- Please do not allow your child to run ahead of you.
- Those who are parking & walking should be alert and aware of traffic and safety during these times.
- Families utilizing the parking lot car line should remain careful and alert due to those who are parking & walking during these times.
- Please do not stop your vehicle in the traffic route to talk to CWS faculty or friends. This is dangerous for our pedestrians and discourteous to other drivers. If you need to meet with a faculty member or talk with a friend please park in an appropriate parking space in order to do so.

## **No Dogs On Campus**

For the safety of everyone, dogs are not allowed on the school campus. If a family wishes to bring their beloved pet in the car with them for arrival or dismissal, etc. the dog must stay securely in the vehicle. (Please be aware of weather temperatures if planning to leave a pet in the car unattended). Additionally, dogs can not attend school events, festivals, meetings, etc.

## **After Care**

The school offers an after-school childcare program for those families who need childcare after the regular school day ends. The program is open to Preschool, Kindergarten and Grade School students. Early Care is from 12-3:00 pm and Late Care is from 3:15-5:30 pm. The afternoon time is intended to be relaxed and to support the child's school day rhythm. Students attending this program must have attended a full school day on the day they are enrolled for After Care. If a special circumstance arises (such as a doctor's appointment), families are asked to inform the After Care teachers or the Business Manager if they must leave early or will not attend After Care.

Annual contracts are available at a discounted rate. Families who wish to use After Care on a drop-in basis must contact the Business Manager, or book online at the CWS website, at least 24 hours in advance to determine if space is available. All After Care must be paid in advance of care.

Our teachers utilize this scheduling information to track available openings for additional contracts or drop-ins. In addition, teachers plan their activities and purchase supplies and snacks based on this information; therefore, after care fees are due regardless of attendance.

After Care availability is limited, so families should contact the Business Manager, or book online, as soon as they know when care will be needed for their child. Fees for After Care are published each year in the fall.

Families in need of After Care on days for which they are not contracted must contact the Business Manager to schedule and pay. Payment for additional days is required to be paid upon request of services. Please contact the Business Manager with any questions regarding the financial policies of the After Care Program.

### **After Care Ends Daily At 5:30 p.m.**

Families must sign out and acknowledge their departure to the After Care Teachers when picking their children up. A late fee of \$5 per 15 minutes will be charged for those families picking up child(ren) after the After care session has ended.

## **Administrative**

### **Student Records**

- Student forms and information related to the student's educational record are kept in the FACTS Family Portal and in the student's physical file.
- Student records are kept confidential.
- CWS will release student records upon receiving written or verbal permission from the legal guardian.
- Legal guardians have the right to review the contents of their child's permanent file upon request.
- Records must be read on the school premises.
- No document may be removed from the cumulative record, but the legal guardian may request a copy of any document contained in it.
- It is recommended that you retain a photocopy of the Certificate of Medical Examination for your records

### **Three Care Streams of Student Support**

Most of the time, students are doing well at school and "in the flow." Sometimes, though, they experience challenges. For one reason or another, they feel out of kilter with their teacher and classmates. Their challenges may have to do with the social realm ("They're being mean to me."); learning challenges ("Everyone knows how to read except me."); or, occasionally, acting out, misbehavior, or non-compliant behavior ("I don't have to if I don't want to; you can't make me.")

Social and emotional well-being is a prerequisite for academic success. The Cincinnati Waldorf School is committed to providing a foundation for healthy learning by supporting those students who are experiencing challenges. This commitment is the foundation of the curriculum and the heart of this education. CWS has adopted Three Care Streams of Student Support process in order to provide as much support as possible for students who are experiencing social, disciplinary, or learning challenges. It is based on the work of Kim John Payne, who is respected worldwide for helping children, parents, and teachers navigate challenge as well as conflict.

Under the guidance of the Educational Support Coordinator, CWS has three streams of students support. Each stream is guided by a faculty member.

### **Underlying Premises of the Three Streams Work**

- **Three Care Teams:**
  - Social Care Team
  - Behavioral Care Team
  - Academic/Therapeutic Support Team
- **Accountability rather than blame.** When things are going wrong things must be set right. Each person involved can take some responsibility.
- **Empathy is key to success in life.** The interventions used at CWS seek to build empathy in the student so that they can learn to stand in one another's shoes.
- **A child who misbehaves is a disoriented child.** Realizing that a student who is pushing the behavioral boundaries is disoriented means the approach with the student is different - less punitive - than when there are behaviors done with intentionality, naughtiness or disruptiveness.
- **Conflict is a necessary part of being human.** To expect that all conflict can be removed from a student's life is setting ourselves up for frustration. Conflict is a given, and most of us have learned our greatest lessons from the conflicts we've experienced. The task is to let students know that we are there, guiding them through their conflicts so that they may learn constructive lessons along the way.
- **Striving to remove hindrances to learning.** Students who experience learning challenges are presenting parents/guardians and faculty with a riddle: What is the key that unlocks their capacities? As educators and parents/guardians, the work is to seek these keys and support the child to find areas of success.
- **Starting with implicit approaches before moving to explicit approaches.** Implicit means "not directly expressed." In other words, it's a process that is there, but the students are not necessarily aware of it. The Waldorf curriculum is rich in implicit approaches to social and emotional challenges. In fact, much of the Three Care Streams work is not apparent to the parent body or the students because it is implicit - embedded in the stories, pictures, artwork, speech, music, theater, and rhythms of the lessons. When a teacher tells the class a story about a character who could never forgive, and describes the hardships this caused him in his working life, this is an example of using a story to address the difficulties that students may be experiencing.

On the other hand, an explicit approach directly addresses a situation in the class or with an individual student. Explicit approaches range from "light approach" ("Children, is this a raising our hands and taking turns time, or is it a speaking out time?") to "heavy approach" (check-in and stay during recess). When supporting a student, the lightest approach is used first. If that doesn't work, a more explicit, heavier approach is used.

For more information on Three Care Streams of Student Support, please see Educational Support Committee Handout found on the CWS website.

The student support process aims to move the student's experience from challenge to resolution. It is a transparent process. Though we cannot resolve all difficulties to the satisfaction of all parties, we strive to address them promptly as they arise and to keep parents informed of our progress through the process.

## **Student Progress**

### **Early Childhood (Preschool & Kindergarten) Student Progress**

Verbal reports of a student's growth and development are given to families during Parent and Teacher conferences in the Early Childhood Program. A written summary is placed in the student's permanent file in the office at the end of the year.

### **Grades (1-8) Student Progress**

Grade school teachers provide a combination of verbal and written information on the student's growth and development. Student progress reports will be made available via FACTS prior to fall and spring parent/teacher conferences. Families receive a written evaluation, called the "Year-End Report", from the class teacher describing the work done during the year. It gives a picture of the student's academic, artistic, and personal growth. This report includes evaluations written by each of the subject teachers. In addition a "Curriculum Report", specific to the student's grade level, will accompany the "Year-End Report". Both of these reports are mailed to families in early summer.

### **High School (9-12) Student Progress**

High school teachers provide a combination of verbal and written information on the student's growth and development. Families receive a written evaluation, called the "Year-End Report", from the class teacher describing the work done during the year. It gives a picture of the student's academic, artistic, and personal growth. This report includes evaluations written by each of the subject teachers. In addition a "Curriculum Report", specific to the student's grade level, will accompany the "Year-End Report". Both of these reports are emailed to families in early summer.

Graduating seniors will also receive an official high school transcript via email in early summer.

## **Student Program Adjustment Policy**

### Policy:

A program adjustment will be made when the Class Teacher and/or Specialty teacher/s determine a student's needs are not being met due to either intellectual, mental, emotional or physical ability.

Once the need for a program adjustment is determined, a meeting with the parent/guardian will be scheduled to discuss what, if any, accommodations can be made outside the normal and regular curriculum of study for the grade and age of the student.

When a student is unsuccessful in any subject due to:

- Extended illness
- Learning challenges as documented by appropriate assessment and accommodation/recommendation by physician/therapist
- Medical necessity with physician/therapist accommodation recommendation

#### Procedure:

- If initiated by a Classroom or Specialty Teacher or Educational Support Coordinator, the Classroom or Specialty Teacher confers with colleagues, who may include High School/Grades Chair, Educational Support Coordinator, and/or Faculty Chair. Documents and information to be considered: grades, participation, make-up assignments, any outside assessments or medical diagnosis by a certified professional will be reviewed.
- If initiated by Parent/Guardian, upon receipt of a request (in writing or in person) for Program Adjustment (parent may use another terminology), the procedure above will commence, with a meeting with the parent/guardian and class teacher, educational support coordinator and/or faculty chair. Documents and information to be considered: grades, participation, make-up assignments, any outside assessments or medical diagnosis by a certified professional will be reviewed.

## **Tuition & Fees Information**

### **Tuition & Fees**

Each year the Finance Committee makes recommendations for the coming year's tuition and fees based on projected needs of the school, including faculty salaries, prospective enrollment, and field trip costs. The Board of Trustees sets the final tuition/fees amount and notifies families as soon as possible.

### **Enrollment Contract:**

Before a student begins attending class, a FACTS enrollment packet must be completed, signed, and submitted, along with a non-refundable enrollment deposit. Once the packet and deposit are received, the school promises to provide a space for the child in the class. By signing the enrollment contract, the family promises to pay for the entire year. The school depends upon this financial commitment and determines its budget accordingly.

### **Tuition Payments**

Payments may be made on an annual, semi-annual, or monthly basis. Semi-annual and monthly payments must be completed via a FACTS payment agreement using a checking/savings account or credit card. There is a one-time \$60 fee to set up the FACTS payment agreement.

### **Release from the Tuition Contract**

If a family anticipates a move during the contract period, they must inform the Enrollment

Director and Business Manager as soon as they're aware of this change. Families moving more than 60 miles from the Cincinnati Waldorf School will be released from their contractual obligations. The family will be required to provide proof of residency.

Families not relocating, but who wish to withdraw a student in good standing, will be obligated to pay 50% of the remaining tuition balance per child. This includes Ed Choice families, who will be obligated to pay 50% of the tuition voucher that the school expected to receive from the state.

If a child is asked by the school to withdraw, the family is automatically released from their Tuition Contract. Tuition will be prorated up to the day of withdrawal.

***Please note:*** All tuition debt from the previous year must be paid before a student is allowed to re-enroll for a new school year. If families experience financial difficulty in making their payments, it is imperative that they communicate their situation to the Business Manager. The situation will be kept confidential, and a payment plan may be worked out that is practical during a financial crisis. If parents do not make contact and the tuition is 60 days in arrears during the year, the school may ask that a child not return to school until the balance is paid in full or other financial arrangements have been made.

## **LOWER SCHOOL & HIGH SCHOOL STUDENT FEES**

Student fees are paid annually and provide the Cincinnati Waldorf School faculty the ability to plan educational experiences both inside and outside the classroom based on a fixed, secure fee per student. Class trips include such experiences as theater productions, Pentathlon, Medieval Games, Renaissance Faire, canoe trip, ski trip, rock climbing trip, camping, farm block experience, pumpkin patch, etc.

Parents/guardians will not be asked for additional fees throughout the school year to cover class experiences including field trips, with the exception of the Grade 8 and Grade 12 Class Trips. Remaining fees necessary for these trips will be paid by each individual family with the hope that a family will encourage their student to earn the remaining amount via home & community service (i.e. child care services, home chores, summer work, etc.). The funds to be raised for the 8th grade and senior trip are pre-set and consistent year to year. Student fees are collected as part of the tuition contract and accounted for through the CWS budget. Student fees must be paid in full by June 1<sup>st</sup> directly to CWS, or may be included as part of a family's FACTS tuition payment agreement. Any unused annual student fees are rolled over into the Grade 8 or Grade 12 Trip fund for that particular class. Families who leave CWS prior to Grade 8 or 12 will not receive fee or fundraising reimbursements. Forfeited fees will roll into the final trip fund for each particular class.

## **Tuition Assistance**

The Cincinnati Waldorf School envisions a school community of all races and cultures. We strive to achieve a student body rich in socioeconomic diversity. One means of achieving our goal is through granting tuition assistance. We may also receive gifts from



benefactors who are particularly interested in making Waldorf Education available to a wide spectrum of people.

Tuition assistance is awarded based on a family's demonstrated financial need. Need is determined using an independent analysis firm and/or the Ohio Department of Education website. Families who demonstrate a sincere interest in a long-term Waldorf education for their child(ren) are given priority. Those who receive tuition assistance are expected to offer their time and talent, in the form of volunteer work, to the school.

***Please note:*** To receive copies of our Tuition Assistance Policy and process, please contact the Business Office or view the specifics on our website.

## **Fundraising**

Traditionally, tuition covers the majority of an independent school's budget. Charitable donations, fundraising events, and annual giving make up the balance of the budget. The Cincinnati Waldorf School is very conscientious of our fundraising projects and limits our fundraising projects to annual events such as the Annual Fund Campaign fund drive and the Spring Benefit.

### **The Annual Fund Campaign**

The Annual Fund Campaign giving program is an event common to most independent schools. It has been created to foster greater community participation in the financial life of the school. The Annual Fund Campaign is a way for current families, alumni families, and friends of CWS to express their shared commitment to the mission of the Cincinnati Waldorf School. Gifts of all amounts are gratefully accepted during the Annual Fund Campaign to support the operating budget and to help us provide the best Waldorf education to our students. CWS seeks full participation of our parents and are grateful for every gift. Tangible and visible results can remind us of the importance of giving and enable the community to take pride in what is accomplished through common effort.

### **Confidentiality Policy**

CWS respects the privacy of each family at our school by keeping confidential any personal information, particularly of a financial nature. It is out of this respect that we limit private family financial information to the CWS Business Office Team. Other CWS Faculty, Board of Trustees and Finance Committee members, including those CWS parents who serve on these bodies, may have limited access to confidential personal or financial information on an as needed basis. CWS Board and Finance Committee members must sign a Confidentiality Agreement as part of their Trustee/Committee acceptance. Violation of such confidentiality by a CWS Faculty, Board or Committee member is taken extremely seriously and is reviewed by the CWS leadership for appropriate action.

## **General Information**

### **Licensing**

Information about laws and regulations governing the Ohio Department of Education Charter for Independent schools is available through the Hamilton County Educational Service Center.

The State of Ohio Department of Education licenses the CWS Early Childhood and After Care. The laws and rules governing child care are available upon request. Any family upon request may peruse the school's licensing records, including compliance reports from State Inspections and evaluation forms from Fire, Building, and Health Departments. Our license is posted in each Early Childhood classroom.

### **Snow Closings**

- There may be instances when school work will be expected to be completed on a designated snow day. This could be in the form of online learning or at home assignment, etc. Teachers will communicate with families about snow day homework expectations.
- In the event of snow or treacherous road conditions, school may be closed or be put on a two hour delay
- Parents/guardians will receive a CWS Alert Text and Email when there is a delay or school closing
- School delays and closings will be posted on the school website
- When consulting local television channels for an announcement, we are listed as "Cincinnati Waldorf School"
- The school makes "delay" decisions by 5:30 am
- The school makes "delays turned to closed" decisions by 6:30 am
- The school makes "closed" decisions by 6:30 am
- CWS **does not** automatically follow Cincinnati Public Schools' decisions.
- Once the students arrive, school will remain open.
- Families are always free to make the decision to keep their children home from school, or to retrieve them early, if concerns about the weather or road conditions arise.

### **Lost & Found**

Lost and Found items are kept in a public space on campus. It is encouraged that parents clearly label their student's personal items. Periodically, the items are reviewed to identify any items that are clearly marked with a student's name. Those marked items may be returned to the student or their classroom. Unclaimed items may be donated to charity.

### **CWS Marketing Materials Policy**

CWS seeks the written consent of our families to use images of their children and/or families in our school marketing materials including print materials such as open house advertisements or school event fliers and electronic and social media such as on our school website pages, on our school Facebook page and Instagram. Written consent is sought by families through a "CWS Consent Form" as part of the CWS Enrollment forms .

CWS families may deny consent and the school will respect their request. If at any time a student or family image is used in error, CWS will remove the image immediately. CWS cannot be held accountable for the use of CWS student/family images by current, past or non-related CWS persons for non-CWS related materials.

### **CWS Website & Social Media Policy**

CWS administration will routinely maintain and monitor our school website and social media sites such as Facebook for content. Content deemed as non-supportive or unrelated to CWS may be removed at the discretion of CWS administration.

### **CWS Dress Code**

Students should come to school dressed in practical clothes that allow for movement and protection from the elements. Articles of clothing and accessories should not have negative, offensive, illegal, or violent words or imagery. Clothing and accessories should be sensible, practical, sturdy, and allow for complete freedom of movement and allow for students to participate fully in school activities. Teachers have the responsibility and right to ask a student to change clothing and/or accessories that interfere with sensible and safe learning.

Footwear should be well-fitted, sturdy and practical. Flat sole shoes, boots or sandals must be sensible, safe, and weather appropriate. Sandals must be fitted with a strap around the heel. The following types of footwear are not allowed: **Clogs, platform shoes, platform boots, flip-flops, slip-on sandals or crocs.**

Students should have separate footwear for indoor and outdoor use to help keep our school clean. Please check periodically that indoor shoes have not been outgrown and that outdoor shoes are suitable for the weather. Students will get dirty!

### **Additional Clothing Guidelines for Preschool and Kindergarten students**

- Clothing should be plain and simple with no media images.
- Please provide a complete, labeled change of clothing, including socks and underwear, to be stored in the child's backpack. .
- Preschool and Kindergarten children are required to wear sun hats in the fall and spring. Hats must be in compliance with the CWS Dress Code. Please see the guidelines of each individual teacher for specific sunhat information.
- Children wear non-skid slippers while in the Early Childhood classrooms (kindergarten and preschool). A pair of slippers will remain in the classroom and should be brought with the student on the first day of school. Slippers should be plain and simple-no media images allowed.

### **CWS Music Department Information**

#### **General information**

Every student will start their string instrument education in 4<sup>th</sup> grade and will choose a

string instrument (violin, viola, cello or bass). They are expected to play their chosen instrument until the end of 6<sup>th</sup> grade. From 7<sup>th</sup> to 8th grade students will have the opportunity to either continue playing their string instrument in the strings ensemble or instrument ensemble.

- Strings ensemble will include violin, viola, cello and bass.
- Instruments ensemble will include ukulele, guitar and piano for instance. Also,

High school students will have the opportunity to play an instrument for all four years of High School and they will choose to either participate in the string ensemble (string chamber orchestra) or the chordal instrument ensemble (ukulele, guitar and piano).

## **Choosing an Instrument**

### **The Violin**

The violin is held under the chin, is the highest pitched, the smallest and the lightest string instrument.

### **The Viola**

The viola is held under the chin as with the violin and has a lower register than the violin. It has a deeper sound, and it is usually a little bit bigger than the violin.

### **The Cello**

Cellos have a deeper sound than violas, since they have a lower register. Cellos are held while sitting, between the legs. Cellos are much bigger and heavier than a viola which should be noted when considering choosing this instrument and how it will be transported to and from CWS.

### **The Bass**

Basses are the largest and deepest of the string family. They are played while standing up or resting slightly on a stool. Usually there are one or two bass players in a string class. This is the biggest instrument of the string family and transporting it would need a bigger car.

## **Private lessons**

Private lessons are highly recommended for all CWS students, but not mandatory. A one-on-one setting allows for much more individualization and attention than in a large group. The sooner students are able to start private lessons; the more comfortable the student will be in class. It is encouraged that new students in 4-12th grade look into taking private lessons before beginning at CWS.

## **Selecting a Private Teacher**

Consult the CWS Music Teacher, your string shop, or friends for recommendations. Also, consider location, price per session and time availability. Most students who take private lessons eventually find the school assignments easy; however, if your student does not, make sure that your private strings teacher is willing to help your student on the school assignments. The best teacher is the one who can motivate your child to practice for

improvement with every lesson.

### **Practice**

Musical instruments require regular and attentive practice at home. To see improvement in playing a musical instrument, practice is recommended on a daily basis with focus on proper positioning which trains the muscles to automatically do the “right” thing. Sporadic practice or “cramming” with infrequent lengthy sessions is not helpful. Practice records will be given to students every week. Lack of practice will be apparent in the student’s lack of progress with the risk of falling behind the rest of the class.

### **Materials Needed for Music Class**

Students should bring their own instruments and accessories (rosin, cleaning cloth, shoulder rest, etc.) to each strings class. Bass players will be able to use an instrument at school. Our strings teacher will provide books and music to be used at school and will also provide some materials to use at home for practice.

### **Renting an instrument**

Antonio’s Violins has a history of renting to our students and supporting our strings program and we highly recommend it. On the other hand, you may certainly go to another string shop if you prefer.

## **Communication**

### **Communication with Faculty Members**

Communication with your student’s teacher is extremely important if you have concerns regarding your student’s experience at school. Parents/guardians are encouraged to talk with their student’s class teacher first regarding questions or concerns about the class. Sometimes this can take place in class parent meetings and sometimes it is more appropriate to discuss issues individually with the teacher. Drop-off and pick-up are generally not good times to discuss concerns and questions about a student or the class. Though it is tempting to ask a “quick question” at these times, teachers must remain focused on their students and it will be much more effective to set up another time to discuss matters.

The flow chart of communication for grievances or difficulties is as follows:

1. Speak directly to your student’s class teacher
2. Speak to the Department chair
3. Speak to the, Faculty Chair or Administrative Director

### **Schedule Changes**

Please communicate schedule changes to your student’s teacher and to the office by email, in writing, or by phone. These include a parent or designated family/friend picking a student up early and absences due to vacations, etc. It is very important that

the school is notified when a student will miss school.

### **Teacher Conferences**

Teacher conferences are held two times each school year. These are of utmost importance in maintaining open communication about each student's progress and development. Families are expected to attend. Families or teachers may request additional conferences when needed.

### **Class Meetings**

Class meetings are scheduled throughout the year and enable families and teachers to discuss the curriculum and the student's work in relation to the challenges of the developmental stages of childhood. These meetings are important. To miss them is to miss a significant link in understanding this education and a chance to connect with the families of the other student's in the class.

CWS communication is sent frequently primarily via email with regard to important school information that families need to know. We strongly encourage all families to REGULARLY check email for important information on school events, dates and deadlines!

### **Waldorf Weekly**

- *Waldorf Weekly* is our informational e-newsletter e-mailed to our community each Friday
- *Waldorf Weekly* is published less frequently during the summer months
- Please read *Waldorf Weekly* carefully; it contains important information about school events, schedule changes, Waldorf education, special projects, and communications from faculty, board or committees.
- If you have an item to contribute, you may submit it for consideration to the front office.
- Due to content and the number of requests we receive, we may not include all requests.

## **Teacher Communication**

### **CWS Lead Teacher & Family Communication**

Each CWS lead teacher will have his or her own policy on how and when best to communicate. Please review this policy with your student's teacher. We encourage respect for our faculty's time out of the classroom and off campus by limiting the length and content of emails and phone conversations.

### **Subject Teacher & Family Communication**

Families may need to contact CWS Subject Teachers (such as handwork, music, woodwork, language, etc.) for class information, concerns or questions in a subject class. When there are concerns please communicate with the subject teacher and the class

teacher.

### **Email**

In a world where technology continues to evolve and allows for instant and far-reaching communication vehicles it is important that there are basic guidelines concerning the use of email as a form of communication at our school.

All families enrolled at CWS will have accurate email addresses available in FACTS. CWS will use these email addresses to share and communicate important school-related information and news.

For the protection of any and all emails sent to individual faculty members, emails will be shared amongst CWS faculty and leadership as the schools sees fit.

As a healthy practice, the CWS faculty encourage the use of face-to-face communication whenever possible. CWS encourages all of us to find ways to have helpful conversations that can bring a sense of resolution and understanding among our school community. If you need assistance with a communication issue, please contact a member of CWS leadership for assistance.

### **Use of School Space**

To avoid double booking our school calendar, all meetings held at school must be arranged through the main office.

### **Use of School Materials**

Families seeking to use school materials and property outside of the normal student usage for daily curriculum needs, must obtain permission from the CWS Faculty. Due to our regulatory and legal obligations to Mariemont School District, CWS may not gift or loan Mariemont property to CWS families unless for the sole use of CWS students for the direct purpose of CWS curriculum. At no time may a CWS family use Mariemont materials for personal use.

## **Wellness**

### **Illness**

Please do not send sick students to school. The family will be called if the student develops a fever or is too ill to participate in normal school activities. Please be sure your student is well enough to participate in all activities before returning to school and is fever free with improved symptoms for at least 24 hours prior to returning to school.

### **Forms**

Please complete all student forms in the FACTS Family Portal before the 1st day of school each year.

## **Mildly Ill Students During the School Day**

Students who appear to be mildly ill will be cared for by our faculty for a short while using methods such as relocating them to a supervised, safe and quiet space to rest and by soothing the student to help make them feel comfortable. If a student continues to feel ill they will be sent home from school.

## **Communicable Diseases**

If any of the following symptoms: signs of diarrhea, severe coughing with a chopping sound, lice infestation, conjunctivitis (pink eye), temperature of 100 degrees Fahrenheit, untreated infected skin patches, difficult or rapid breathing, yellowish skin or eyes, skin rash, dark urine, gray or white stool, stiff neck, or vomiting develop during the school day, an authorized adult will be called to pick the student up from school. A place to rest quietly away from the group will be provided until transportation arrives.

Please notify the Main Office if your student contracts a communicable (contagious) disease so the exposed teacher and families of the student can be notified. Teachers who become ill with a communicable disease follow the same procedure as the students. The Board of Health lists the following communicable diseases as reasons for keeping a student home:

- \* Chicken Pox
- \* Impetigo
- \* Infectious Hepatitis
- \* COVID
- \* Pertussis (whooping cough)
- \* Venereal Disease
- \* Pinworm
- \* Rubella
- \* Common Cold
- \* Head Lice
- \* Influenza
- \* Meningococcal
- \* Mumps
- \* Croup
- \* Streptococcal Sore Throat
- \* Cough
- \* Scabies
- \* Diarrheal Diseases
- \* Meningitis
- \* Thrush
- \* Herpes Simplex (HSV)
- \* Measles
- \* Conjunctivitis

*-List subject to change*

A student may return to school after an illness:

- 24 hours after the student no longer shows signs of fever, vomiting, cough, or diarrhea. If appropriate, a doctor's note verifies the student may return to school.

*In accordance to Ohio State Law, a child isolated due to suspected communicable disease shall be:*

1. Cared for in a room or portion of a room not being used in the preschool program
2. Within sight and hearing of an adult at all times. No child shall ever be left alone



or unsupervised

3. Made comfortable and provided with a cot. All linens and blankets used by the ill child shall be laundered before being used by another child. After use, the cots shall be disinfected with an appropriate germicidal agent, or, if soiled with blood, feces, vomitus or other body fluids, the cots shall be cleaned with soap and water and then disinfected with an appropriate germicidal agent
4. Observed carefully for worsening condition; and
5. Discharged to parent, guardian, or person designated by the parent or guardian as soon as practical

### **Special Health Conditions**

If special conditions exist for a student, a Health Plan form stating the nature of the condition, its treatment, and emergency procedures must be on file. Families must provide teachers with the appropriate training needed to give the student proper care. Examples of the need for a health Plan would include a student with diabetes, asthma or a severe food allergy.

**Students may never have medicine, including over the counter remedies, in their possession.** If your student needs to receive medication while at school, an Administration of Medication Form must be filled out by the parent and kept on file in the office. These are available upon request in the office.

A Faculty member is assigned the task of administering the student's medication. Prescription medicine must be in a container identifying the student, doctor, dosage, and time for administration. All medications are stored in a locked storage unit in the main office, or the medications can be stored in locked filing storage in the teacher's room (for convenience) and dispensed by the teacher. In cases of students with severe asthma or allergies, permission may be granted for inhalers and epi-pens to be carried in the class backpack in order for them to be available to the student at all times.

### **Injury**

Our CWS faculty will treat students with minor injuries such as cuts, stings, or bruises. A CWS Incident Report will be completed whenever a student is injured, has an accident, requires emergency transportation, or is given syrup of ipecac. Faculty will treat the minor injuries appropriately. The incident report will be documented and available to parents/guardians. Be sure to keep your Family Portal in FACTS up to date regarding contact persons or telephone numbers. Emergencies and accidents will be handled as requested by the family on the Emergency Transportation Authorization Form filled out prior to the school year. If medical treatment seems necessary, the family will be called. In an emergency, a student may be transported to a hospital or dentist by car, using a car seat if needed. The Emergency Transportation Authorization Form also informs the Faculty of any special conditions about your student's health, including allergies.

### **CWS Concussion Policy:**

CWS faculty are trained in first aid and will use the following guidelines when a student

appears to have suffered a head injury:

- Faculty may remove a student exhibiting signs, symptoms, or behaviors consistent with having sustained a concussion, such as loss of consciousness, headache, dizziness, confusion, or balance problems.
- Faculty may also require a student to sit out of school activity for a period of time including the rest of the day upon demonstrating any symptoms.
- Faculty may also recommend to a family that the student be assessed and receive written clearance by a physician or licensed health care provider in order to return to any school activity. This clearance could be maintained in the student's file.
- Faculty provides all families with the The Ohio Department of Health Concussion Information Sheet and requests parents to sign the acknowledgment form to be filed in each student's personal file.

## **Home Life**

### **Popular Culture**

CWS strives to increase students' awareness and personal involvement in the sciences, history, and the arts. Our experience is that popular culture can overwhelm the student's thinking and imagination. We make an effort to quiet the influence of pop culture within the school and seek to build within each class, and the school as a whole, a community that respects and appreciates a healthy and harmonious approach to life.

### **"Screen Time"**

As adults, we have developed filters for the barrage of electronic stimulation that we encounter each day. Many educators, both inside and outside of Waldorf, have observed that cell phone use, social media, television viewing and computer usage can have dramatic and detrimental effects on students. Television, cell phones, computers, movies, and other popular media interfere with a student's ability to learn, play, and socialize. Hearing loud or aggressive music or disturbing details from the news on the ride to school can make for a very unsettling start of a child's day. In addition, items with violent content should be limited as much as possible.

The media present students with strong, ready-made images, which require no active participation on the part of the viewer and, therefore, tend to numb the imagination and interfere in creativity and thought processes.

We are convinced that limiting your student's exposure to electronic media is the best way you can support the work of your child's teachers, ensure that your student receives the maximum benefits of a Waldorf education, and get the highest return on the investment of your tuition dollars.

It is clear that media producers often target young students. We find that young children

who are exposed to inappropriate images, music or content are frequently unable to interact with their classmates in a creative and harmonious manner.

We encourage you to make a concerted effort to minimize or eliminate television viewing and excessive screen usage by your students.

We strongly request that any screen time including video games, television, electronic games, computer usage, movie viewing, smart phones, etc. does not occur during the school week, Monday through Friday.

### **Food:**

Children's bodies expend a lot of energy in order to grow, learn, and interact with the world. Children at every age need wholesome nutritious foods, eaten at regular intervals, to sustain them throughout the busy school day.

It is in the best interest of your child to choose healthful, nutrient-rich foods for snacks and lunches. Choose foods that are beneficial for a child's body. It will enhance their educational experience.

### **FOODS THAT BUILD ENERGY AND WELLNESS**

#### **Powerful Proteins:**

- Meats: chicken, fish, ground beef, beef chunks (grass-fed meat is best and wild caught fish is best)
- Eggs
- Beans, Lentils
- Milk (Whole organic milk is best from a local farmers)
- Cheese
- Yogurt (Plain, organic is best)
- Nuts

#### **Fantastic Fats (these help to sustain energy):**

- Butter (Organic is best)
- Olive Oil (First cold pressed, unrefined)
- Coconut Oil (First cold pressed, organic, unrefined)
- Avocado
- Flaxseed oil

#### **Cool Complex Carbohydrates:**

- Fresh Veggies: Peppers, Kale (cooked), Broccoli (cooked), carrots, celery, fermented vegetables
- Grains: Brown rice, sprouted breads, quinoa, oatmeal, millet, organic wheat (organic is key to reduce exposure to glyphosate)
- Fresh Fruit: Apple slices, banana, pear slices, berries

## **FOODS THAT WEAKEN**

### **Limit the following:**

- Packaged food
- Sugar, refined carbs, and refined flour-based foods
- Excessive sweet food
- Fast food restaurants
- Soda (not allowed at school)
- Juice

### **Top Toxic Food Ingredients:**

- Sodium nitrates and sodium nitrites
- High-fructose corn syrup
- Hydrogenated Oils (trans-fats)
- Soy, corn, canola oils
- Mono sodium glutamate (MSG)
- Artificial sweeteners (aspartame, saccharin, sucralose)
- Blue, Green, Yellow, and Red artificial colors

*Note: To comply with State licensing regulations, a child's lunch must contain 1/2 cup servings of the following food groups: 1 protein; 1 dairy; 1 grain; 2 fruits or vegetables. The school is required to supplement any missing food group for children eating lunch in After Care. Should the teachers find themselves supplementing a child's lunch on a regular basis, the family will be informed. If a child is on a restricted diet (i.e. dairy allergy or vegan diet), please submit a letter stating so to the Office. The letter will be placed in the child's file. All uneaten food will be returned home so parents are aware of what and how much their child is eating.*

## **PACKING IT UP:**

### ***MEAL AND SNACK EXAMPLES***

#### **Breakfast ideas:**

- Eggs, bacon/sausage, and carrot slices
- Millet/oatmeal with lots of butter and coconut oil
- Smoothie including full-fat yogurt, or full-fat coconut milk, berries, protein powder, stevia/raw honey/maple syrup, avocado slices
- Omelets or egg cups with cheese and veggies
- Sprouted Toast with sunflower seed butter, hard boiled egg, fruit

#### **Snack/Lunch ideas:**

- Cheese and fruit
- Yogurt (plain, organic, full-fat) with pumpkin/sesame seeds, and berries
- Smoothie (see above)
- Crackers or tortilla chips with guacamole or cheese
- Chicken slices with homemade dipping sauce (made with butter or olive oil)

- Applesauce with melted butter/ghee added to it, coconut milk, and hemp seeds
- Leftover meat and veggie soup. Avocado slices. Cheese and chicken rolled up together with lettuce. Apple slices with cheese.
- Hard boiled eggs. Hummus and veggies. Peach slices. Cheese.
- Celery with cream cheese.
- Olives.
- Leftover supper from the night before.
- Sautéed apples in butter with cinnamon.
- Popcorn with lots of butter and Celtic sea salt.
- If you use bread, make sure it is sprouted (Ezekiel) or homemade sourdough. Sandwich with butter, leftover meat, cheese, lettuce.
- Strawberries in yogurt.
- Cucumbers.

### **Basic principles to guide you:**

1. Make sure your child eats breakfast. This stabilizes blood sugar which leads to increased focus and mood stability.
2. Include a healthy protein and healthy fat in each meal and snack
3. Include fresh fruit and a lot of fresh veggies.
4. Avoid anything packaged or with artificial ingredients
5. Plain water is best!!!!!! Avoid juices, sodas, vitamin drinks, and coffee.
6. Make every effort to avoid and reduce refined sugars.
7. Eat each meal with gratitude and slowness...revel in the beauty of your food, this world and people who provided it.

### **Logistics of food at school:**

- Preschool and Kindergarten children are given a snack at mid-morning. Grade School children bring a home-packed lunch and snack to be eaten mid-morning. High School students eat at a designated lunch time.
- Parents/guardians can order from our school lunch program for their student.
- If a student brings a home packed snack/lunch know that it should be packed with freezer packs to keep it cool. Lunches are not refrigerated during the school day.
- A refrigerator, microwave and tea kettle are available.
- When packing your child's lunch, please consider using reusable food and beverage containers and utensils along with a cloth napkin. Using reusable containers is good for the environment and we encourage this practice along with the minimal use of pre-packaged snacks and plastic baggies.

### **After-care specifics:**

- If your child stays for the After Care program, please send a healthy lunch that is nutritious and wholesome. Please do not send food made with chewing gum, soft drinks, or sweets.
- Snacks are served in After Care for children who stay from 3:15 pm until 5:30 pm. Snacks typically include fresh grains and a fruit or vegetable each day.
- Children from the Early Childhood classes who stay for After Care enjoy lunch together in the Early Childhood classrooms. Lunchtime around the table is a social form that initially can be a bit overwhelming for some children. If during the first weeks of school you find your child to be "picking" at his or her lunch, please be patient. Soon, the afternoon routine will be established.
- To comply with State licensing regulations, a child's lunch must contain 1/2 cup servings of the following food groups: 1 protein; 1 dairy; 1 grain; 2 fruits or vegetables. The school is required to supplement any missing food group for children eating lunch in After Care. Should the teachers find themselves supplementing a child's lunch on a regular basis, the family will be informed.
- If your child is on a restricted diet (i.e. dairy allergy or vegan diet), please submit a letter stating so to the Main Office. The letter will be placed in the child's file. All uneaten food will be returned home so parents are aware of what and how much their child is eating.

## Safety

### Safety Drills

Rapid Dismissal/Fire drills are conducted monthly 6 times during the school year, tornado drills are conducted monthly in season and 4 Safety drills occur yearly (One must involve being secured in the building sheltering in place). Emergency routes are posted in each classroom. For more details, you are welcome to review our entire CWS School Emergency Operations Plan available in the main office.

In case of a tornado or severe weather WATCH, the administration will monitor the weather, post a lookout, and notify teachers of the weather conditions; in addition, the office will notify teachers that a warning has been issued for the area. If the public warning system siren sounds, teachers will lead children to their designated shelter(s) and remain there until the "all-clear" signal is sounded.

Ohio schools are required to establish a safe school environment with the assistance of local law enforcement and emergency agencies. Our school has in place a School Emergency Operations Plan that outlines our school safety guidelines.

Here is what the Ohio Revised Code says about school safety.

School Safety Planning - O.R.C. Section 3313.536 - The board of education of each city, exempted village, and local school district and the governing authority of each chartered

nonpublic school shall adopt a comprehensive school safety plan for each school building under the board's control. The board shall examine the environmental conditions and operations of each building to determine potential hazards to student and staff safety and propose operating changes to promote the prevention of potentially dangerous problems and circumstances. In developing the plan for each building, the board shall involve community law enforcement and safety officials, parents of students who are assigned to the building and teachers and non-teaching employees who are assigned to the building. The board shall consider incorporating remediation strategies into the plan for any building where documented safety problems have occurred.

The plan shall incorporate both of the following:

1. A protocol for addressing serious threats to the safety of school property, students, employees, or administrators;
2. A protocol for responding to any emergency events that do occur and that compromise the safety of school property, students, employees, or administrators.

Each protocol shall include procedures deemed appropriate by the board for responding to threats and emergency events, respectively, including such things as notification of appropriate law enforcement personnel, calling upon specified emergency response personnel for assistance, and informing parents of affected students.

### **Campus Security & Safety**

The exterior doors of all campus buildings are locked at all times. Visitors are permitted on school grounds only if they are on official school business. Visitors must sign-in at the Main Office and get a visitors badge.

### **Do not prop open school building doors! If you see a door propped, close it!**

If a community member sees any suspicious activity or someone on campus that appears to be loitering, please notify the main office or any immediate faculty member immediately. CWS main office faculty will immediately call the police for support. The police will promptly arrive and properly handle the individual. By calling the police, officials are able to track the frequency of violations and build evidence for any necessary future action by CWS and the authorities.

For the safety of your children at play and for the respect of the students and faculty at work, we request that all children not in school be closely monitored by their family while on the CWS campus during the normal school day.

We encourage your family to feel at home on campus while being mindful of your children and the others using the space. Please be considerate of the volume level and

with keeping the communal spaces clean and tidy. We truly appreciate your efforts to keep our school a welcoming space for all our CWS families. If you have any suggestions or see something that needs our attention, please contact the main office.

### **Child Neglect & Abuse**

Faculty are required by law to report suspicion of child abuse or neglect to the local Public Children Services Agency. The number is 241-KIDS.

### **Emergency Plans**

#### **Fire**

Fire exit maps and safety locations are posted in all of the classrooms and other strategic locations in the building. Teachers know and share the exit plan from the building with the students. Primary and secondary exits are listed for fire drills. A fire alarm will sound in the building for a drill or in a real fire situation. Teachers will shut windows, take attendance sheet and close the door after the class has exited the room silently.

Students and teachers exit the building by their assigned route and gather at the designated meeting spot.

Students stay with their class, office staff and teachers take attendance in each grade.

Teachers spread out among the grades to ensure safety, order and efficiency.

Everyone remains outside of the building until the all-clear is given by the administration and safety personnel.

#### **Tornado**

In the event of a tornado watch, administrative faculty will monitor radio and websites for tornado warnings. If a warning is issued, an administrative staff member will alert the rest of the building. The teacher will take the attendance sheet and close the windows and blinds as students line up to exit the room.

Students and teachers exit silently and go quickly and directly to the specified lowest level safety area away from windows and glass in doors. Teachers will take attendance and report missing students immediately to an administrative staff member. Students will assume the protective position facing interior walls and covering their heads with arms and wait in silence, keeping in shelter until the storm has passed or all-clear is given by administration.

#### **Shelter-in-Place**

The administration will announce the Shelter-in-Place throughout the school and follow safety protocol based on reason for sheltering.

When a Shelter-in-Place happens at a passing time, break or lunch, upon hearing the announcement, immediately get to the closest safe location in the building. Follow all faculty and administrative staff instructions and remain sheltered until receiving an all clear announcement from law and safety personnel.



Faculty will lock classroom doors, close windows, draw blinds, take attendance, be ready to report information to administrative staff and account for all students. Remind students who may have cell phones in their possession to not use them to call or send text messages in order to not bog down the cell towers for emergency responses and accurate, efficient communication.

### **Direct Threat to Campus Security and Safety**

In the unlikely event that the school is threatened by a perpetrator with intent to harm, our faculty are trained in the ALICE/active shooter preparedness response method. This is a system now being used by many school districts that gives individual teachers the latitude to assess a situation and take the action they deem the most likely to protect the students in their care. These responses could include a traditional lock-down (doors, locked, window blinds drawn, students hiding in the corners of the room, informing police of threat information); an enhanced lockdown where furniture is used to barricade doorways for example; or evacuation through windows or out available doors. Students will be taught to follow faculty instructions. Our goal is to help students escape a dangerous situation.

In a true emergency, Police and Fire Personnel will clear each space in the building before giving an “all clear” announcement. Students would be transported to a re-unification area to reunite with their families.

### **Threat Assessment Team**

In accordance with the Ohio Safety and Violence Education Students Act, CWS has assembled an internal multidisciplinary decision making team with the responsibility of monitoring and assessing possible threat or harm which could have the potential of impacting the school community. The CWS Threat Assessment Team meets regularly and has established strong relationships with local authorities to assist, when needed, in assessing threats to the school and determining when to direct families to support resources. Each member of this team has undergone an approved training program. Much of the Threat Assessment Team training shares the effectiveness of building and growing a strong school community which can help to ensure less incidents of concern to school safety.

### **Safer Ohio School Tip Line**

**Report Concerns for Student Safety: 844-723-3764**

The Safer Ohio Tip Line is a free safety resource available to all Ohio schools. The tip line is an anonymous reporting system that accepts tips via call, text, webform, and mobile app 24 hours-a-day. Anyone can download the Safer Ohio School Tip Line app or [use the webform](#).

This tip line allows students and adults to anonymously share information with school officials and law enforcement about threats to student safety-whether that involves a threatened mass incident or harm to a single student.

Things to report to the tip line include (but are not limited to):

- Bullying incidents
- Withdrawn student behaviors
- Verbal or written threats observed toward students, faculty or schools
- Hazing
- Weapon/suspicious devices on or near school grounds
- Gang-related activities
- Unusual/suspicious behavior of students or staff
- Self-harm or suicidal sentiments
- Any other school safety-related concerns

Every tip can remain anonymous. Tip line technicians may ask for additional information, but the caller can remain anonymous or leave their contact information for later follow-up.

Tips submitted to 844-SaferOH (844-723-3764) are triaged and notify local school officials, law enforcement agencies, and the Ohio School Safety Center (OSSC) for action and follow-up as needed.

The OSSC partners with the Ohio Department of Education to follow up with affected school and law enforcement agencies to make sure that the incident is investigated, action is taken and resources and supports are provided when necessary.

## **Campus Visitors**

### **CWS Family Visits**

Family members are free to visit the school during school hours. However, members seeking to observe in the classroom should confirm visits with the Teacher or Enrollment Director prior to the visit. Families on campus for classroom observation must report to the Main Office upon arrival to sign in and receive a visitors badge.

### **Statement of Unlimited Access:**

Any parent or legal guardian of a child enrolled at the Cincinnati Waldorf School [Early Childhood Preschool, Kindergarten, Grades 1-8 or the High School], shall be permitted unlimited access to the school during its hours of operation and be allowed to make contact with the child to evaluate the care provided by the program, the safety of the premises or to assess for other purposes approved by the Faculty Chair and/or Administrative Director. Upon entering the premises, the parent or legal guardian shall report and sign in at the school office.

### **Visitors (Non-CWS Family)**

- In order to better serve our visitors and to ensure the safety of students, name tags shall be worn by visitors at all times during their visit to the school grounds. Visitor tags must be worn visibly.

- Visitors are to report to the main office to sign in immediately upon arrival. Please facilitate this effort by directing visitors there.
- In the Office, visitors must identify the nature of their business and at times provide verifiable proof of identity.

### **Past CWS Student Visitors**

CWS welcomes visits from our past students. Any visit must first be coordinated with and approved by a CWS Faculty member (i.e. Faculty Chair, etc.).

In-school events are NOT open to visiting past students. At times, an in-school event may be opened to CWS graduates, parents or past students. If so, this will be clearly communicated and an RSVP must be coordinated with and through the main office.

Typically visiting students at in-school events will be expected to act as a volunteer for the event and will be under the supervision of their parent/guardian. Visiting students may NOT be dropped off without prior approval by our CWS Administration. If visitors arrive without prior approval, their parent/guardian will be called immediately to pick them up.

All past student visitors are expected to conduct themselves in accordance with all school policies and practices and will be held to the same code of conduct of our current students.

### **CWS Chaperone Guidelines**

*(Day & Overnight Trips)*

CWS is grateful for all the time and energy family members contribute as chaperones to assist and support our faculty on school field trips. As a chaperone you are expected to support the trip Lead Faculty member by guiding and assisting students in following all rules and guidelines set for students on the trip. Chaperones are expected to be prime role models for students in behavior, engagement and in all other ways, during the trip.

When chaperoning, the following guidelines apply:

- Our school follows a “Two-deep Leadership Model” for school events which means that at least two adult chaperones are assigned to each group of students.
- Chaperones must be 21 years of age or older and must have an approved background check on file with the CWS Business Office. CWS covers the cost of the background check for trip chaperones.
- Chaperones will not be alone with a single student where they can not be observed by others.
- Chaperones will only share tents/sleeping space with students that are their own legal children.
- Chaperones will not abuse students including physically, mentally, sexually, verbally or otherwise.
- Chaperones are responsible for being informed of and abiding by state laws in the state that they are traveling in.

- Any recordings played in the vehicle must be age-appropriate and approved by the chaperone.
- Chaperones are encouraged to foster conversation, games and other positive social exchanges among the students in the vehicle.
- Chaperones participating in school events that incur costs (i.e., admission, equipment rental, and lodging) will pay their own fees. Chaperones who cannot afford the fees are encouraged to speak with the class teacher or other person coordinating the school event.
- Chaperones will not consume alcohol or illegal drugs or smoke while chaperoning for any school event.
- Chaperones will limit the use of smart or cell phones or other electronic devices (i.e. taking pictures, texting, emailing, etc.) in the presence of students.
- Chaperones are expected to be fully present to tend to students and engage in the activities of the trip.
- Chaperones and teachers will do their best to ensure that the chaperone's own child will experience the trip as the other students in the class do, without special privileges or treats due to their family's presence.
- It is generally inappropriate to have younger siblings of students attend field trips.
- Chaperones will not allow students to use phones, to watch or use any media, video or computer games or use any other electronic devices.

## Discipline and Conduct

### Code of Conduct

The Cincinnati Waldorf School is committed to education that grows out of a full human experience and engages the hand, heart and spirit. The Faculty strives to educate the student's unfolding self in a loving and respectful environment by tapping into the power of imagination, connecting with the rhythms of the natural world, and integrating the intellectual with creative life energy. Meeting these goals is the responsibility of everyone connected with the school. Therefore, we have general expectations for everyone. The intention behind these expectations is to create an environment in which the gifts of Waldorf education can be experienced.

### Code of Conduct for Families

- Provide a home atmosphere conducive to the student's social, emotional and educational wellbeing.
- Provide nutritious and filling snacks and lunches for the school day.
- Collaborate with CWS Faculty in implementing plans for correcting discipline & behavior modification.
- Review appropriate school policies and school rules with your student.
- Ensure that your student is at school on time and that they are collected from school promptly.
- Send your student in clothing appropriate and functional for the season and needs of their school day, (i.e. sturdy shoes, clothes for playground and

- Games class participation, etc.).
- Send your student in with clothing, blankets, slippers, hats, or any other pieces of clothing free of media characters and graphics or advertisements (please refer to our dress code for more details).
  - Treat all faculty with courtesy and respect at all times, especially in times of disagreement.
  - Make use of the opportunities given by the school to learn more about Waldorf education.
  - See that your student gets adequate sleep and unstructured time for “free play” and personal time.
  - See that your student has a specific time and place to do their homework.
  - Parents are strongly encouraged to strictly limit the exposure to various forms of media including television, smart phones, social media, the internet, computer games, videos and films.

### **Code of Conduct for Students**

**Families may choose to read this section with their child.**

- Remember that everyone's personal safety and wellbeing is foremost.
- Be at school on time and in the classroom on time for every lesson.
- Conduct yourself during the lessons in such a way that the teacher can teach the class with minimal interruptions.
- Treat all teachers, parents, and fellow students with the same courtesy and respect you would wish to receive.
- Help keep the classroom and the school grounds clean and tidy.
- Treat all property, not just your own, with care. You will be required to repair or replace anything (apart from your own personal property) that has been damaged due to destructiveness or carelessness.
- Remain within the school boundaries while at school and never leave the school campus without permission.
- Always strive to do class work to the best of your ability.
- Keep your school books in good order, up to date, and in good condition.
- Hand in all required assignments on time.
- Leave chewing gum, radios, toys, electronic devices, etc. at home unless specific permission has been granted for school use.

(An additional Student Code of Conduct will be reviewed for High School students during the first week of school. This Code of Conduct will be discussed and signed by High School Students and a copy will be provided for each family).

### **General Guidelines for Student Behavior**

Please line up promptly and quietly with your classmates. When you are told that you may go in, please go quietly, and without pushing. If you need to use the restroom please remember that you should be in your classroom on time for the lesson to begin without interruption.

## **In the classroom**

Please follow your teacher's requests quickly and quietly. Everyone needs a quiet atmosphere to do well, so your cooperation is needed and will be recognized. Some questions that you may have need to be answered right away so that you are able to do your work well. Other questions may be better asked at the end of the lesson since they are of a more personal nature. Try to learn which questions to ask right away and which would be better asked at another time. Remember teachers are expected to give students opportunities to ask questions and express concerns so they will be happy to arrange to do so.

Each teacher will have their own expectations that may be slightly different from other teachers. All teachers expect students to raise hands when they want to say something, instead of just shouting it out. In some lessons you will be expected to stay in your seat most, if not all, the time. In other lessons it may be possible to move around the room quietly and still other times when movement is expected! Learn to adapt your behavior to the situation, always remembering that everyone's personal safety and wellbeing comes first.

If a student disrupts a lesson by interrupting the work of the class, then that person is denying the students their right to learn and the teacher's right (and duty) to teach. This cannot be permitted. Of course, if you think or feel that a situation is unfair, you have the right to express your concerns but politely and at the right time-sometimes the right time is "now" sometimes it is "later". If, after speaking calmly to the teacher, you are still not satisfied, then speak to another teacher, or your family. Your family may decide the best thing is to have a conference with the teacher or teachers concerned so that the matter can be resolved.

If you ever feel that your safety and wellbeing have not been respected, tell a CWS faculty member who you trust to help you resolve the issue and certainly talk with your parents about it.

If you need something at school - always ask! Never take anything from anyone else without asking first. If you take something without asking first, it may be considered stealing - even if you were only "just borrowing it".

You will be expected to play your part in keeping your classroom and the school grounds clean and tidy. Please don't wait to be asked!

At no time is any student to be in a classroom without adult supervision, except in certain cases - when a teacher has given special permission.

For clarity, chewing gum, sitting on tables or windowsills, marking classroom furniture, writing on walls, etc. are not allowed at school. Other things not allowed at school include personal electronic devices, and most toys. You should always ask if

you are not sure about something you would like to bring to school. If you do bring something not allowed, a teacher may take it from you. It will either be given back to you at the end of the day or at a time determined by your teacher(s), or your family may be asked to pick it up from the main office depending on what it is.

### **In the buildings**

In between lessons, and when you are going from one place in school to another, you are asked to behave quietly and safely. Please walk quietly and do not run or shout. Please keep to the right when going up or down stairs and when passing other people. Inappropriate conversation, disrespecting other and unkind behavior is not allowed at school, either indoors or outside, at any time.

### **When Outside**

Rule number one: Everyone's safety and wellbeing come first. Think about what "safe play" means - and help other people when they forget! As you and your friends are playing, remember that the game stops when anyone in the game says that they don't want to play anymore. Even though teasing someone may seem like fun, it is never fun for the person being teased therefore teasing is never allowed at our school.

Hitting people, or hurting them by name calling or using foul language is not allowed at school. In a conflict situation, call upon a teacher to help you. At our school we use methods called "conflict resolution" and sometimes "peer mediation" to help us resolve conflicts and your teachers can help you with this process.

For safety reasons, we cannot allow anyone to kick any balls in the play area unless under the direct and constant supervision of a teacher. Using hard surfaced balls (like baseballs) or heavy balls (like footballs) is not allowed for the same reason. If you are not sure, ask a teacher. Again for safety reasons, the throwing of snowballs is not allowed. Often snowballs turn into ice balls and can cause injury. Please don't think that because your snowball is not made of ice it is OK to throw it. At school, throwing snowballs is not allowed.

Bicycles, skateboards, scooters, or other "wheeled" equipment are not allowed on the Lower School campus during school hours.

Please stay in our defined outdoor areas during school recess or outdoor class time. Once you are outside, you may not go into the school buildings or outside the defined areas without specific permission from a teacher. This means that you always have to ask for permission before leaving the defined recess areas.

### **When on school excursions**

Keep together and listen to the teachers and other adults who are with you. Follow their requests quietly and without loud argument. If you have something to say, always remember that politeness works best! Your behavior away from home and school is a reflection of them both. Remember that you represent not only yourself, but also your

family and our school. Therefore, please behave in such a way that people see you at your best and think well of all of us.

### **When at school assemblies and functions**

The same simple rules apply as when you are on school excursions. Please do not use shouting or inappropriate cheering as a form of applause. Clapping is more appreciated. Booing or any other form of unsupportive behavior is hurtful, rude and is not allowed.

Please remain quiet between presentations during assemblies. Please pay attention to what is going on so that teachers do not have to call you to order. Remember that we always have guests at our functions and we do not want them to get a wrong impression of you.

Please arrange with the teacher to have photos taken afterwards or during a dress rehearsal so that the class does not have its concentration spoiled during the actual performance. The teachers will be happy to help coordinate a photo opportunity.

### **CWS Discipline Guidelines**

#### **Discipline Guidelines for Early Childhood**

The young child learns primarily through imitation. Therefore, by providing an example of behavior that is worthy of imitation many disciplinary situations are avoided. Beyond this, reminders of appropriate behavior and/or classroom expectations are usually all that is needed. Occasionally a more direct approach is required as outlined below:

- Redirection of behavior to appropriate play and activities.
- Removal of child from their self-selected activity to a teacher-directed activity
- Removal of children from the group to help regulate behavior through watching, listening, and calming to self-regulate and rejoin the group.
- If a child repeatedly needs to sit in watching/resting space, families will be informed of the difficulties their child is having.
- If a child's behavior becomes extremely disruptive to the learning environment, is harmful to themselves or others, unable to regain self-control with help from the teacher, the family will be called to pick up their child from school.
  - Together, the family, teacher, and Educational Support Coordinator will work out a plan for the child to return to class successfully.
- If the family needs to be called a second time, a meeting with the family, teacher, and Educational Support Coordinator may be required before the child returns to the classroom. The needs of the child will be discussed along with a revised plan for the child's return to the classroom and recommendations for further support for the



child. The child's progress as a member of the class community will continue to be evaluated.

- If a third such incident should occur, a meeting will be required between the family, teacher, Educational Support Coordinator, and Administrative Staff to discuss whether the child may continue to be enrolled at the Cincinnati Waldorf School.

## **Discipline Guidelines for Grade School**

### **Behavior/Incident Reports**

Teachers in a Waldorf school have full authority over discipline in their classrooms, and each has his or her own individual style. Teachers will keep parents informed about their approach to discipline, and parents are encouraged to ask their student's teacher if they would like to know more and to inform them if there are circumstances in the student's life that may result in misbehavior at school.

CWS has three simple rules that guide our behavior at school:

- Respect yourself and others
- Respect school materials
- Respect the learning environment of yourself and your peers

Because children need to learn to conduct themselves appropriately, discipline is part of everyday school life. Children learn to behave properly under their teachers' guidance and through reinforcement, reminders, and redirection.

### **Serious Misconduct: Inappropriate and Aggressive Behavior**

Serious misconduct is behavior that goes beyond expected improper behavior in degree, persistence, intent, and the effect it has on other students. Examples of serious misconduct that result in a behavior/incident report for grades K-8th include:

- Intentional Aggression Towards a Peer or Faculty Member: Pushing, hitting, biting, scratching, pinching, spitting, ect. with the intent to hurt another student or faculty member.
- Intentional Verbal Injury Towards a Peer or Faculty Member: Demeaning, insulting, taunting, ect. to another student or faculty member with the intent to hurt.
- Intentional Destruction of Property: Intentional physical behavior that destroys an object, damages an object, defaces an object.
- Written, spoken, drawn or gestural expressions: Distressing, provocative, threatening, vulgar, obscene or violent.
- Repeated Noncompliance: Lack of proper response to a repeated command from teacher or staff, fails to meet criteria for compliance of request within time specified by teacher staff.
- Possession and/or use of materials that are obscene: Vulgar, violent or pornographic; weaponry or otherwise dangerous items; tobacco, alcoholic beverages or other controlled substances.

- **Bullying:** Hostile behavior that is targeted at an individual, is intentionally harmful, is persistent, and demonstrates a relational imbalance of power. Any form of inappropriate or aggressive behavior – physical, verbal, gestural; in writing or images – that meets these criteria will be determined to be bullying

## **Bullying**

Bullying is defined as hostile behavior that is targeted at an individual, is intentionally harmful, is persistent, and demonstrates a relational imbalance of power. Any form of inappropriate or aggressive behavior whether it is physical, verbal, gestural, in writing or images, that meets these criteria will be determined to be bullying. Additional forms of bullying include but are not limited to:

- Sexual bullying: Unwelcome physical contact, sexually abusive comments, stalking, homophobic victimization, etc.
- Emotional bullying: Exclusion, ignoring, intimidation, inciting others to bully, demeaning, taunting, etc.
- Racist bullying: Racial insults, jokes, gestures, graffiti, racist insignia/badges, circulating racist literature, etc.
- Cyberbullying: via electronic media, internet, including but not limited to, emails, text messages or image messages, social media posts or messages, etc.
  - Includes but not limited to posting slurs or rumors or other disparaging remarks about a student on a web site, social networking page, or on a web blog; sending e-mail or instant messages that are mean or threatening, or so numerous and incessant, taking and sending embarrassing photographs of student(s); posting misleading or fake photographs of student(s) on a web site, social networking page or blog.
  - Cyber-bullying is not tolerated. Violation of the cyber-bullying policy may result in disciplinary probation, suspension or dismissal. The reposting and further distribution of such content is also bullying.

## **Response to Misconduct and Probationary Procedures**

Responses to misconduct and probationary procedures are grade specific. Please read below for the Lower School specifications. The High School guidelines in these matters are located in the High Student Handbook

**Instances of serious misconduct listed above will result in a Behavioral/Incident Report. Students in grades 6-8 will also receive an accompanying “pink slip” given to them by the teacher who reports behavior/incident report in order for them to feel the effect of their behavior. At this age, CWS believe children are ready to understand the relationship between cause and effect and firm boundaries can help them establish their own moral compass in the future.**

It is important to note that some negative behaviors can be within the scope of normal child development yet may not be construed as bullying. Some examples of behaviors that do not meet the criteria in the definition are:

- Teasing or joking that isn't intended to hurt
- Impulsivity
- Behavior or statements meant to be complimentary
- Automatic reactions to various forms of injury

### **Instances of Serious Misconduct Process**

- 1st instance: Email parents/guardians of behavior report within 24 hours.
- 2nd instance: Email parents/guardians and request phone conversation
- 3rd instance: Conference with parents at the request of the teacher and/or Educational Support Coordinator. Students are prohibited from attending overnight trips until Behavior Care Stream deems the student has shown behavioral improvement.
- 4th instance: Student is placed on Behavior Probation. The duration of the behavioral probation lasts 6 weeks. Students may not attend clubs and/or extracurricular activities during this probationary period. This includes but not limited to school athletics, dances, off-campus field trips, etc..

**Any incident of serious misconduct while on behavioral probation will result in unenrollment from CWS.**

- 5th+ instance *while not on* probation will result in an immediate return to 6-week behavioral probation and a conference with parent(s).
- Students on Behavior Probation will be required to do the following:
- Frequent faculty check-in's, especially during recess & transition periods.
- Frequent 1-1 check-in's with Educational Support Coordinator, Class teacher.
- Frequent parent communication.
- A meeting with parent(s) is required for any student on probation

### **Probation Policy**

Any student enrolled at the Cincinnati Waldorf School may be placed on a probationary period based on behavioral, social, or academic concern. The purpose of probation is to alert a student and his or her parent(s)/guardian(s) to serious concerns about either academic performance or behavior.

New students, that is, students enrolled in CWS for the first time, including all incoming first graders, are automatically on a 8-week probationary period pending full admission to our school. At times, the probationary period may be adjusted to a different length of time

as determined by CWS. This provisional period may be extended beyond the first 8 weeks at CWS discretion.

During a probationary period, teachers and staff may call upon the family for conferences, by telephone or in person, to discuss the child's progress. At any time during the probationary period, the admission of the student is subject to review up to, and including, unenrollment from CWS.

### **Un-enrollment Policy**

CWS expects families to agree to accept the regulations and common ideals of our education and school. In addition, we ask that families agree to work collaboratively with the board, faculty, and administration on behalf of their child(ren). The Cincinnati Waldorf School shall have the right to deny any student from attendance, temporarily or permanently, under any circumstances determined in the sole discretion of CWS, including but not limited to

- Student interference with the health, safety, or educational development of the student or any other student
- Unsatisfactory student progress or conduct
- Past due tuition or other fees owed to the school.
- Actions or the presence of a family are inconsistent or are not in support of the educational environment, leadership structure and/or are counterproductive to a positive working relationship between CWS and the family.

### **Self Endangering & Socially Destructive Behavior**

As a school dedicated to the healthy development of adolescents, we regard it as the work of the adults in the students life to work directly with the student towards the correction of any self-endangering and socially destructive behavior. These include emotionally and physically self-destructive speech and behavior, such as talk of suicide, drug and alcohol use, self-mutilation, abusive relationships.

- All rumors of self-endangering and socially destructive behavior, regardless of how petty or where the alleged behavior took place, will be taken seriously by the faculty and followed-up on in a timely manner. Parents will be notified that such a suspicion has arisen and informed of what has been learned.
- Students can be instrumental in securing help for classmates in need: such situations are usually far more serious than they appear on the surface. We encourage them to approach a parent, teacher or administrator for help in finding a way of addressing a problematic situation.

### **Academic Probation**

Any student deemed by the teacher to be having serious, ongoing academic difficulties can be placed on academic probation, after consultation with the Faculty Chair/Educational Support Coordinator.

Students in Grades 6th-8th grade could be at-risk of academic probation for the following:

- Excessive incomplete or missing assignments.
- Not using time available during class to complete work.
- Frequent Absences (see absent/tardy policy)

The academic expectations and length of the probationary period will be specified, in writing, to the student's parents. Failure to improve academic performance or to attain the required expectations may result in possible unenrollment.

Any student on academic probation is prohibited from attending any extra curricular activities including dances, team sports, individual sports or curricular overnight trips, ect.

### **Ohio Department of Education Requires families to be notified of the below regulation 3301-37-10 of the Administrative Code from the Ohio Department of Education**

*The Cincinnati Waldorf School's actual methods of discipline shall apply to all persons on the premises and shall be restricted as follows:*

*There shall be no cruel, harsh, corporal punishment or any unusual punishments such as, but not limited to, punching, pinching, shaking, spanking or biting. No discipline shall be delegated to any other child. No physical restraints shall be used to confine a child by any means other than holding a child for a short period of time, such as in a protective hug, so the child may regain control. No child shall be placed in a locked room or confined in an enclosed area such as a closet, a box or a similar cubicle. No child shall be subjected to profane language, threats, and derogatory remarks about himself or his family or other verbal abuse.*

*Discipline shall not be imposed on a child for failure to eat, failure to sleep, or for toileting accidents.*

*Techniques of discipline shall not humiliate shame or frighten a child. Discipline shall not include withholding food, rest or toilet use. Separation, when used as discipline, shall be brief in duration and appropriate to the child's age and developmental ability and the child shall be within sight and hearing of a preschool staff member in a safe, lighted and well-ventilated space. The Cincinnati Waldorf School shall not abuse or neglect children and shall protect children from abuse and neglect while in attendance in the preschool and school program.*

### **Cell Phone Policy:**

Cell phones during the school day are a major and unnecessary distraction. CWS has the following cell phone policy to ensure that all students are able to fully take part in academic lessons, social interactions, and all of the events of the school day.

***In general, cell phone devices are not permitted to be used on campus during school hours.*** CWS recognizes that some older Grades students and certainly High School students may need to have a phone at school to use during after school times therefore the following rules must be honored and followed:

- Students will turn off their phones and keep them put away in backpacks or lockers during the school day.
- Some teachers may prefer to set up a system in the classroom for students to place their phones. If this is the case the phone will still be turned off and unused during the school day.
- Students **will not** use their cell phone in any way or at any time during the school day\*. This means no texting, calling, social media use, etc. at any time. If a student has a need to make a phone call, they can receive permission from their teacher to go to the main office to use the office phone.

\*High School Exception: High School students are permitted to use their phones without expressed permission between classes but are asked to do so in good judgment.

\*Medical Purposes: Students with medical conditions that require monitoring while at school, are permitted to use their cell phones for these purposes only. Parents/guardians will arrange this with the school prior to cell phone use in this way.

- Students in CWS After Care are to follow the same cell phone policy that is in place during the school day.
- High School Exception: High school students staying after school for clubs, sports, etc. may use their cell phones to communicate with their carpool drivers or parents/guardians and to listen to music with headphones/air pods, etc. High School students are not to use their phones for social media purposes or to watch videos, play games or browse the internet during these times.
- This cell phone policy applies to field trips (day trips and overnights) unless the circumstances of the trip require otherwise which the school will determine.

The following steps will be taken if a student is not honoring the school cell phone policy\*:

1. 1st Offense: Reminder to not have the device out. Faculty members will take the device to the main office. The student must stop by the Main Office at the end of the school day to retrieve their cell phone.
2. 2nd Offense: Reminder to not have the device out. Faculty members will take the device to the main office. The student must stop by the Main Office at the end of the

school day to retrieve their cell phone. The parent/guardian will be notified about the incident.

3. 3rd Offense: Faculty members will take the device to the main office. The parent/guardian will be notified. The cell phone will be picked up by the parent/guardian at the end of the school day.

**If a student has 3 or more violations, the student will be required to drop off their device to the main office upon arrival and retrieve it at dismissal on each school day for 6-8 weeks.**

\*High School Exception: High School Faculty may decide a plan for a High School student that is more individually specific to the inappropriate cell phone use situation.

## **Suggested Reading and Media**

### **Books/Articles:**

Haidt, Jonathan. *The Anxious Generation: How the Great Rewiring of Childhood Is Causing an Epidemic of Mental Illness*, 2024

Lembke, Anna. *Dopamine Nation: Finding Balance in the Age of Indulgence*. Headline, 2022.

Payne, Kim John. *Simplicity Parenting: Using the Extraordinary Power of Less to Raise Calmer, Happier, and More Secure Kids*. Ballantine Books, 2010.

Payne, Kim John. *Being at Your Best When Your Kids Are at Their Worst: Practical Compassion in Parenting*. Shambhala; Illustrated edition, 2019

Jensen, Frances. *Teenage Brain*. Harpercollins Canada, 2016.

Winn, Marie. *The Plug-in Drug: Television, Computers, and Family Life*. Penguin Books, 2002.

Fenner, Pamela Johnson, and Karen L. Rivers. *Waldorf Education: A Family Guide*. Michaelmas Press, 1995.

"5 Tips for Cultivating Empathy." *Making Caring Common*, Making Caring Common, 13 Dec. 2021,

<https://mcc.gse.harvard.edu/resources-for-families/5-tips-cultivating-empathy>

### **Podcasts:**

Kim John Payne/Center for Social Sustainability. The Simplicity Parenting Podcast with Kim John Payne | Apple & Spotify Podcasts. 2018-2022

Ashley Renwick. Waldorfy: Exploring Waldorf Education & Anthroposophy | Apple & Spotify Podcasts. 2019-2022.

Andrew Huberman Ph.D. Controlling Your Dopamine For Motivation, Focus & Satisfaction | *Huberman Lab Podcast #39* - Apple Podcasts. 2021

### **Films/Video:**

*The Social Dilemma*. Directed by Jeff Orlowski, Exposure Labs, 2020. *Netflix*.

Anita Collins. "How playing an instrument benefits your brain." 2014. *TEDtalk*

Waldorf 100. "Waldorf 100: The Film". *Youtube*, March 11, 2017.

### **Websites:**

"Catalyze a More Humane Future." *Center for Humane Technology*, <https://www.humanetech.com>

"Cincinnati Waldorf School Antiracism Commitment." *Resources for CWS Families*, <https://www.cincinnatiwaldorfschool.org/antiracism-commitment>

## **Getting Involved**

Volunteers are an essential part of the life of the Cincinnati Waldorf School. Due to the independent, self-administered structure of our school, faculty and families may share the tasks and joys that comprise the ongoing functions of the school. We ask every family to consider how they might offer their gifts of time and service to the school. It is a personally rewarding experience, and allows us the opportunity to participate in our children's education and solidify our connections to this community. Whether you prefer working with children, with adults in large or small groups, or on your own, there is a place for you!



## **The Parent Association**

The CWS Parent Association (PA) was formed in 2000 to facilitate family involvement in developing a healthy, inclusive, and vital community in coordination with the Faculty, Board and Administration.

## **If your child is enrolled in CWS, you are a member of the Parent Association!**

The PA welcomes and encourages families to attend the monthly meetings and offer a variety of ways to contribute to the healthy life of our school.

## **Class Representatives**

Class Representatives support the class teacher by providing logistical support and communicating with the class families about class activities, field trips, meetings, and school events. Class Representatives are also asked to attend the monthly Parent Association meeting.

## **Community Meetings**

Community Meetings are held during the school year as necessary. These meetings provide an opportunity for the entire Cincinnati Waldorf School community of families, faculty and friends to come together to learn about the education and our work together to move our school forward.

## **Adult Education**

Our school provides various ways in which interested community members can learn about the Waldorf curriculum. Information evenings, workshops and special events are coordinated and offered throughout the school year.

## **Office Support**

Family members with organizational skills or experience working in an office may contact our administration for opportunities to regularly volunteer or be available for occasional projects.

## **Fundraising**

The Parent Association also sponsors fundraisers to support the faculty through grants and annual donations to Faculty Development. Family members interested in helping with annual fundraising efforts may contact their class representative or one of the Parent Association leaders.

## **Recommended Reading in Support of Waldorf Education**

The following is a selection of books that provide an overview of Waldorf education as well as related works on child development and family life.

**Waldorf related articles, blogs and other recommended reading is also available**

on our school website at:

<http://www.cincinnatiwaldorfschool.org/articles-blogs-links/>

- ***Understanding Waldorf Education; Jack Petrash***
  - An excellent introduction to, and overview of, Waldorf Education.
- ***Between Form and Freedom, Betty Staley***
  - A practical-guide to the teenage years.
- ***Children with Special Needs, Rudolf Steiner's Ideas in Practice, Michael Luxford*** A concise introduction to Rudolf Steiner's ideas on the education of children with special needs.
- ***Creativity in Education, Rene Querido***
  - An overview of the purposes, philosophy and methods of the Waldorf approach to education.
- ***The Education of the Child, Rudolf Steiner***
  - A short introduction to Waldorf education.
- ***Encountering the Self, Hermann Koepke***
  - A Waldorf teacher reveals the processes of the nine-year-old change.
- ***Eurythmy, Rudolf Steiner's Ideas in Practice, Thomas Poplawski***
  - An introduction to the principles and practice of Eurythmy, the new art of movement initiated by · Rudolf Steiner.
- ***The Hurried Child, David Elkind***
  - Discusses stress among modern children and how they are being robbed of a cherished childhood.
- ***The Magical Child, Joseph Chilton Pearce***
  - Challenges many trends in modern child rearing which he believes are leading us to a disturbing rise in child abuse, functional illiteracy, and general malaise.

***On Learning to Read: The Child's Fascination With Meaning,***

- ***The Recovery of Man in Childhood, A. C. Harwood***
  - A fine beginning, this book focuses on child development and the ways that Steiner education meets the growing child.
- ***Rudolf Steiner / Waldorf Education, American version, edited by David Mitchell***
- This booklet is an excellent first encounter, with photos, artwork, and a clear text.
- ***Teaching as a Lively Art, Marjorie Spock***
  - The most detailed and engaging grade-by-grade description of the curriculum available.
- ***Toward Wholeness: Rudolf Steiner Education in America, M.C. Richards***
  - "One of the most satisfying... books on Steiner." New Age magazine.
- ***Waldorf Education: A Family Guide, edited by Pamela Johnson Fenner and Karen L. Rivers***
  - A wonderful resource for parents new to the Waldorf school movement. Won: Benjamin Franklin Award.
- ***Waldorf Parenting Handbook, Lois Cusick***
  - Waldorf Parenting Handbook presents useful information on child development and education from Anthroposophic sources.
- ***The Waldorf Schools: 32 Questions & Answers, Wade Holland***
  - A short pamphlet that discusses some of the most commonly asked questions.
- ***The Wonder of Childhood: Stepping into Life, Rene Querido***
  - A small treasure of a book that describes the first three years of the child.
- ***You are Your Child's First Teacher, Rahima Baldwin***
  - An excellent practical introduction to early childhood development for parents.
- ***Raising A Family, Jeanne & Don Elium***
  - Once again the Eliums deliver groundbreaking concepts with new tools for building and maintaining every American family.

***Additional information on Waldorf Education is available at the AWSNA website:  
[whywaldorfworks.com](http://www.whywaldorfworks.com)***

***The information contained in this family handbook is intended to provide general guidelines for our community. CWS faculty and the Board of Trustees have the obligation and authority to make adjustments to processes as deemed necessary for the safety of the school, the students and the general community.***